



High School
Family and Student Handbook
2026-2027

Living God's Story: Rooted, Growing, Serving

*That person is like a tree planted by streams of water,
which yields its fruit in season
and whose leaf does not wither –
whatever they do prospers.*

Psalm 1:3

Table of Contents

Greeting..... 4

About LCHS

Mission and Values..... 5
Accreditation..... 5
Non-Discrimination Policy 5
History..... 6
LCS Organizational Structure & Chart - [Appendix A](#) 7
HS Faculty & Staff - [Appendix B](#)..... 7
Key School Board Policies 7
 Critical Issues/Conflict-Resolution - [Appendix C](#)
 Position Statement on Human Sexuality & Gender Identity - [Appendix D](#)

LCHS Academics

Academics and Honors 8 - 10
Exam Policies 11
Course Registration and Placement..... 11-12
College Level Courses..... 12
Graduation Requirements..... 13
13-14
LCHS Daily Bell Schedule – Appendix E 14
2026-27 School Calendar – Appendix F..... 14
Attendance Policies..... 14-17
Student Services 18
Counseling, College, and Career Center
Student Academic Services (SAS)
FACTS 18

LCHS Student Life

School Traditions..... 19
Extracurricular Activities (Appendix J)..... 19-20
Student Leadership..... 21
School Publications 21
 HS Daily Bulletin
 Final Forms

Lyncs Lines	
Excelsior (yearbook)	
Lynden Christian School App	
Student Transportation.....	21-22
Bus Transportation	
Student Vehicles	
Associated Student Body (ASB) Card.....	22
School Sponsored Functions	22
Lost and found.....	22
Fees and Fines.....	22
Chapel.....	23
Lunch & Snacks.....	23
Visitors.....	23
Building & Equipment Use	
LCHS Building Map - Appendix H	24
Use of Facilities	24
Bookstore.....	24
Library.....	24
Worship & Fine Arts Center (WFAC)	24
Lockers.....	24
Safety and Security	
Student Campus Access Permissions.....	25
Medications.....	25
Defibrillator	25
Drills	26
Technology in School	26
Acceptable Use Policy - Appendix G	
Audio/Video/Photograph Recording Policy	
Social Media	
Weapons.....	26

Student Conduct & Discipline

Goals..... 27

Categories of Conduct27-29

 Category A

 Category B

 Category C

Bystander Responsibilities29

Academic Integrity.....29

Cell Phone Policy29-30

Disciplinary/Behavior Plans 30

Detention30

Suspension30

Expulsion31

Searches.....31

Dress Code and Appearance32

Appendices33-62

Greetings!

Thank you for joining the LCHS community. To God Be the Glory!

Lynden Christian High strives to provide an excellent and comprehensive Christian educational program so students may be rooted in a relationship with God, learn His infallible Word, grow and mature into perceptive and caring Christians, and be equipped by the grace and armor of God to serve in His Kingdom for His glory.

This handbook helps students and parents navigate LCHS's daily life, educational programs, and policies. We hope these policies create a positive student learning experience and foster partnerships with parents. For questions and clarification, please contact the school office.

The administration reserves the final authority to interpret, enforce, and apply these policies throughout the year and may adopt or alter policies as needed.

Dr. Kevin Kaemingk, High School Principal
Kkaemingk@lynchs.org

Dr. Nathaniel Olson, High School Assistant Principal
nolson@lynchs.org

Lynden Christian High School
515 Drayton St. Lynden, WA 98264
360-318-9525
www.lynchs.org

Publication Date: August 2026

About LCHS

Our Mission

The mission of Lynden Christian School is to be an effective instrument of God. Together with Christian parents and the church, we seek to educate children and young people so that they may grow and mature into perceptive and caring Christians. Finally, our goal is to produce citizens who have a transforming influence in the world.

Our Values

Lynden Christian School seeks partnerships with Christian parents to reinforce our shared faith and values. We strive to ensure school policies and procedures governing the school are consistent with the standards of the Bible, which is God's inspired Word. We believe this is God's world, that each child is unique in God's sight, created in His image to live a life of faith and service.

Accreditation/Memberships

Accreditation through Christian Schools International (CSI):

Recognized by Washington State

Washington Interscholastic Activities Association (WIAA):

Competing in the Northwest Conference, 1A Classification

Washington Federation of Independent Schools (WFIS)

Non-Discrimination Policy

Lynden Christian School admits students of any race, color, national and ethnic origin to all the rights, privileges, programs, and activities generally accorded or made available to students at the school. It does not discriminate based on race, color, national and ethnic origin in the administration of its educational policies, admissions policies, scholarships, loan programs, athletic or other school programs.

History

Lynden Christian was founded by a group of families who settled in the pioneer town of Lynden in the late 1800s. They wanted an education founded on the Word of God, allowing them to exercise their parental baptismal vows.

During the spring of 1910, the Society for Christian Instruction was formed, Articles of Incorporation were written, a School Board was selected, and the search for a school building began. Property on Grover Street was purchased in June, and construction began that summer. This building was completed and in service by February 1911. Doors opened in the fall of 1911 in rented quarters with an enrollment of 72 students, which exceeded everyone's expectations!

By 1930, the school offered junior high education. Lynden Christian expanded to include high school in a newly built facility dedicated in 1947. Only two years later, visionary supporters began the first phase of a new elementary school complex near the high school on Drayton Street. The current high school was dedicated in 1965, and the First Street building became the middle school, creating a unified campus.

Always pressing on, supporters moved forward in faith with more campus expansions and improvements:

- 1977: Industrial Arts and Agriculture Building
- 1994: Middle School
- 1999: Central Business Office
- 2002: Worship and Fine Arts Center
- 2006: Renovation of the SE wing of the high school
- 2008: Renovation of the SW wing of the high school
- 2011: Strength and Fitness Center
- 2025: Expansion of the high school parking lot

Lynden Christian School has faithfully provided Christ-centered education for over a century. The years may pass, but the dedication, sacrifice, and vision of the parents remain the same. Our parents continue to fervently desire a faith-based education for their children.

LCS Organizational Structure – Appendix A

Lynden Christian Schools is a private Christian school governed by a Board of Directors elected by the school's "Society," which is comprised of parents and others who support the school. LC is not sponsored or controlled by one congregation but has a diverse church support base of many local churches. The parents are represented through an elected board of twelve members called the "School Board." The School Board makes decisions regarding finances, personnel hiring, providing and maintaining facilities, and determining educational and operational policies and regulations. To implement these policies, the board appoints administrators. The head administrator is the superintendent. The high school, elementary school, and middle school principals are responsible for their respective buildings and staff and are directly accountable to the superintendent.

Please see the Organization chart in [Appendix A](#).

HS Faculty & Staff – Appendix B

The faculty at LCHS is a dedicated group of caring and qualified professionals. All instructors are qualified to teach in their subject area, and many have advanced degrees. Each is employed based on a personal profession of Christian faith, commitment to educational excellence in their teaching, and a willingness to give of themselves for the development of their students.

Please view a list of the high school faculty and staff in [Appendix B](#).

Key School Board Policies.....

Critical Issues/Conflict-Resolution - [Appendix C](#)

Statement on Human Sexuality & Gender Identity – [Appendix D](#)

LCHS Academics

Academic Honor Code

Jesus was asked in Matthew 22:36-40 which commandment is the greatest, and He answered, "You shall love the Lord your God with all your heart and with all your soul and with all your mind. This is the first and greatest commandment. And the second is like it: love your neighbor as yourself. On these two commandments depend all the Law and the Prophets." To love and honor God and others requires Christians to live a life of integrity and honor, which includes refraining from stealing and lying. Students are expected to refrain from plagiarism, which is taking or using someone else's work or ideas and passing them off as their own. This standard applies to all assignments as guided by the teacher, including the use of AI sources. Students are expected to understand and follow this expectation and seek clarification from a teacher or administrator before submitting an assignment or assessment.

Grading Policies

Grading Scale and GPA

Letter Grade	Numeric Grade	GPA	Weighted GPA ¹
A	95-100	4.00	4.50
A-	90-94	3.67	4.17
B+	87-89	3.33	3.83
B	83-86	3.00	3.50
B-	80-82	2.67	3.17
C+	77-79	2.33	2.83
C	73-76	2.00	2.50
C-	70-72	1.67	2.17
D+	67-69	1.33	1.83
D	63-66	1.00	1.50
D-	60-62	0.67	1.17
F	59 or lower	0.00	0.00

¹ Applied only to grades earned in college-level courses taught at LC (AP/CIC)

Semester Grades and Report Cards

LCHS reports official semester grades (both letter and number) on the official transcripts. Semester grades are calculated by averaging the numeric quarter grades and then calculating the exam grade. Report cards are emailed to parents or custodians at the end of each quarter.

Schoology

High school teachers use Schoology as our online academic learning management system (LMS) and instructional tool. It is regularly used to deliver and collect assignments, tests, grades, messages, or other resources. Grades are regularly updated for students and parents to view. Students are expected to check each course on Schoology to keep updated on each course through Schoology.

Student Laptop Requirement

The high school requires each student to bring a laptop to school daily for instructional use. Parents may either provide a laptop or lease a computer from the school. Students may use laptops for educational purposes according to acceptable use and lease policies (refer to Appendix G).

Late Work Policy

Each teacher, in a manner consistent with department policies, will communicate a late work policy to students at the beginning of each semester. For unique circumstances, such as long-term illness, the administration may provide guidance regarding a plan for late work and missed assessments.

Incomplete Grades

At the end of a grading period, teachers may assign an *incomplete* (I) grade for missing or late work. The teacher may allow a student up to two weeks to submit the work that is missing. After the deadline, the teacher will confirm the final grade with the Registrar.

High School Credit

A student who completes a semester course receives .5 credit toward graduation. No credit is earned for a course where a student earns a grade of "F" or "I".

Academic Probation

Based on semester or quarter grades, any student who fails two or more courses will be placed on academic probation for the following term. Probation may impact participation in athletics, activities, or other privileges. Failure to comply with the terms of probation may lead to dismissal or expulsion.

Repeated Courses

All records of repeated courses will be included in the transcript, along with the grade earned in each occurrence. When a course is retaken for grade improvement, the course with the higher grade is included in the student's GPA calculation, and the credits attempted and credits earned for the lower-graded course will be reported as 0.00 on the transcript.

Transfer Students

- Credit from accredited institutions will be accepted and applied to graduation requirements.
- Students transferring in must meet LC graduation requirements.
- Senior transfers are required to be full-time students to participate in all senior activities, including graduation.
- LC accepts grades, weights, and credit as reported on the transcript from previous accredited schools.
- Students must be enrolled at LC for junior and senior years to earn a class rank at graduation.

Academic and Graduation Honors

Honor Roll

The honor roll will be composed of full-time students who maintain a 3.6 GPA or better, while enrolled in 6 or more classes.

Honor Cords

Students will be eligible to wear a blue honor cord at graduation if they have maintained a cumulative 3.6 GPA. The cumulative GPA is calculated after the 1st semester of senior year. NHS members will be recognized with a gold cord.

Valedictorian

Seniors who have earned a 4.0 Cumulative GPA and above (calculated after the 1st semester of senior year) will be eligible to be a valedictorian for their senior class.

Class Rank

LC ranks full-time students within the grade level based on each student's LC Cumulative GPA. Class rank is reported on the official transcript. Students must attend LC for the entire junior and senior years to be eligible for a class rank.

Exam Policies

Exams are an important part of LC's assessment practices and should be taken seriously by all members of the school community. At the end of each semester, each teacher is expected to administer a comprehensive exam or assign a substantial project that assesses content and skills covered during that semester. The final exam or project will count for no less than 15% or more than 25% of the final semester grade. Exam days are early dismissal days and may include a later start time. The exam schedule will be published well in advance to allow students and parents time to make travel and supervision arrangements based on the unique schedule.

Exemptions

Teachers may exempt exams for second-semester seniors who maintain a GPA that is equal to or above their cumulative GPA at the end of the first semester. Teachers will indicate which seniors are eligible for exemption the week before regularly scheduled exams. The exemption policy for seniors also applies to semester courses in the fall.

Exam Procedures

- Each examination period is 90 minutes. Students are required to remain in the exam room for at least one hour. Exam retakes will not be given.
- Early exams are not given unless approved by the administration and teacher.
- Students who miss an exam must immediately contact the teacher to arrange an alternative time within one week of the scheduled exam date.

Course Registration and Placement

Students request courses for the following year after consulting with their Guidance Counselor. The departments and teachers review these requests, which are used to create the master course schedule. Students and parents are encouraged to carefully consider these requests and meet with their Guidance Counselor to review transcripts, post-high school plans, and graduation/grade-level requirements.

Schedule Changes

All schedule change requests must be submitted to the Guidance Counselor and reviewed by the Registrar before the drop/add deadline, within two weeks of the start of the semester. Schedule changes after the drop/add deadline are made only for sound educational reasons and initiated by the administration. These changes will be marked as "Withdrawn" (W) on the transcript and will not affect the student's GPA. Changes that are not initiated or supported by the administration will be marked as "Withdrawn-F" (WF), which will affect the student's GPA.

Scheduling Policies

- Each student may register for a maximum of one guided study per semester.
- Seniors are allowed a maximum of three of the following during the school year: Guided Study, Teacher Assistant, and Parent Release.
- Students may earn a maximum of .5 credit during high school as a Teacher Assistant. Students may not enroll as a Teacher Assistant more than once per semester.
- Pass/Fail Courses:
 - Guided Study- no credit is given for this class.
 - Teacher Assistant- a maximum of .5 credit may be earned by enrolling in this course

College Level Courses

Advanced Placement (AP)

These are college-level courses offered in high school. Students in AP courses may earn college credit or advanced placement if they perform well on the AP test administered in the spring. There is a cost associated with taking the AP test. Students who enroll in an LC AP class for the year will take the AP Exam. Completing the AP exam is a requirement to earn AP credit and weighting on the transcript.

CTE Dual Credit

The Career and Technical Education Dual Credit program helps high school students identify and build career skills. These courses meet the entry-level course requirements of comparable college courses at local community or technical colleges. Students who take CTE Dual Credit courses earn both high school and college credit, provided the student demonstrates proficiency with a "B" or better grade. CTE Dual Credit credits are intended for two-year technical education programs in Washington's community/technical college system.

College in the High School

College in the High School (CIHS) is a cooperative program between high schools and community colleges and universities. The program allows students to earn college credit by completing approved college courses taught by LC teachers. This requires students to earn a strong final grade and pay a credit fee to the college. Courses are taught by qualified LC teachers who work closely with the colleges to ensure alignment with college course standards. Successful completion of the course will show a weighted GPA on the LC transcript.

Graduation Requirements

- Each graduate must have earned at least 24 credits. One credit equals one year of study; each semester course is one-half credit.
- Unless otherwise approved, all graduation credit requirements should be earned by completing LC courses. Students will need prior approval for off-campus courses and must provide proof of registration and a final transcript for non-LC courses.
- Graduation requirement exemption or exception requests will be reviewed and determined by the Academic Standards Committee.

Subject Requirements

Bible.....	4 semesters
Social Studies.....	7 semesters
English.....	8 semesters
Science.....	6 semesters
Mathematics.....	6 semesters
Physical Education...	3 semesters
Health	1 semester
Business.....	2 semesters
CTE Hands-on	1 semester
Fine Arts.....	4 semesters
World Languages.....	4 semesters
Electives	2 semesters

Senior Presentations

Each senior is required to design and present a speech that reflects their experience and growth during their time at LC. Seniors are guided by staff mentors and are evaluated according to criteria developed by staff. This requirement includes giving two different presentations (small group of staff members, family/friends) publicly. This presentation is a graduation requirement and will be noted on the transcript.

Student Enrollment Status

Diploma Seeking (Full-time)

- 9th, 10th, and 11th graders are expected to enroll in seven LC classes each semester
- 12th graders are expected to enroll in 6 LC classes each semester. If all graduation requirements are on track for successful completion, a senior may enroll in a reduced load (a minimum of four courses each semester) and still maintain full-time status. In these cases, full tuition will apply.

- *Non-LC Credit* – Full-time students who seek to earn graduation credit from other accredited educational institutions must obtain prior approval through the exemption process (see Guidance Counselor).
- *Exemptions* – Graduation credit and full-time exemptions may be approved for students with unique circumstances or accommodations that prevent them from fulfilling LC’s graduation or full-time requirement. These students must follow the exemption process through a Guidance Counselor.

Non-Diploma Seeking

- Students in the community (home school, etc.) may enroll in available LC courses. Tuition will be assessed on a per-course basis, along with additional administrative, student, and course-specific fees.
- These students are expected to follow the LC handbook and course policies.

LCHS Daily Bell Schedule – Appendix E

This schedule applies when school is in session for a full week. During shorter weeks and special days, the high school schedule will be altered to ensure an equitable distribution of instructional time. Schedule changes are available in the *HS Daily Bulletin*. Please see [Appendix E](#) to view the Daily Bell Schedule.

2026-27 School Calendar – Appendix F

The school calendar allows students and parents to know when school is in session, breaks, and teacher workdays. Please see [Appendix F](#) or go to the school website to view the calendar

Attendance Policies

Each day presents new learning experiences and opportunities for growth academically, spiritually, and socially. Therefore, LC requires students to attend and participate in classes, activities, and assemblies throughout the school day. The following attendance policies encourage attendance and promote learning.

General Principles and Expectations

- LC is committed to in-person learning, and the teachers design instruction accordingly. Therefore, students are expected to be in school every day unless they are providentially detained.
- Because absences hinder learning, students should be present, on time for every class (including chapel and other activities), and prepared to learn. Absences have a cumulative effect on student learning, regardless of the reason or circumstance. Excessive absences will likely result in grade reduction or loss of credit.

- In case of absence, parents should promptly notify the school office and provide documentation as necessary.
- Students are responsible for studying missed content, submitting missed assignments, and completing missed assessments in a timely fashion and according to each teacher's policies.

Office Notification

If a student is absent, a parent or guardian must notify the office before 8:30 am with the reason for the absence and documentation as needed through email at hsattendance@lynchs.org or by phone at 360-318-9525 (option 3); text messages are not acceptable documentation to the office. The office will classify and record each absence. Absences will be classified as unexcused if the office does not receive timely and appropriate information or documentation.

HS Absence Definition

Under the current modified block schedule, each class meets three times/week for approximately four hours of instruction. Each unit of attendance equals one class hour. Therefore, the longer block periods (M-Th) are counted as 1.5 units of attendance, and the periods on a black day are counted as one. A regular week of classes equals four units of attendance per class.

Types of Absence

School-based

Approved school-sponsored trips (class, team, etc.) absences are a part of the educational program and are not counted as part of a student's absence record or applied to the Excessive Absence Policy. Approved absence due to inclement weather will also be counted in this category.

Parent-based

These absences include illness, appointments, emergencies, trips, and other absences initiated by a parent. These absences are tracked by the office and apply to the Excessive Absence Policy.

Unexcused

These absences include undocumented absences and truancy. Unexcused absences will result in disciplinary action by the administration. Unexcused absences are tracked by the office and apply to the Excessive Absence Policy. Missed assessments or assignments may only be completed at the teacher's and administration's discretion. In the case of truancy, the administration may give additional behavior and academic consequences.

Excessive Absence Policy

Students must meet attendance requirements to receive credit for each class. The following policies will be applied in the case of excessive parent-based and unexcused student absences for each class:

- Upon the sixth absence (six hours) in a semester, students and parents will be notified with an email from the office. They should carefully review the correspondence and policy regarding further absences.
- Upon the eighth absence (eight hours) in a semester, the administration will review the attendance record and consider applying a grade reduction for each additional absence up to the eleventh absence.
- Upon the twelfth absence (twelve hours) in a semester, the administration will review the attendance record. Based on this review, the student may lose credit for that class.

Extended Absence Due to Illness

For severe or prolonged illness, exceptions to the excessive absence policy will be evaluated by the school administration. Documentation from a medical professional is required within one week of any such extended absences. Unless other arrangements are approved, students absent due to illness are expected to complete missed assignments and assessments according to each teacher's late work policy.

Extended Absence for Other Reasons

Students who plan to be absent from school for more than two consecutive days must complete a Planned Absence Form and return it to the office five days before the planned absence. Teachers will not routinely provide online instruction or assignments ahead of time; students must make prior arrangements with each teacher and comply with course policies regarding missed instruction, assignments, and assessments. These absences fall under the Excessive Absence Policy.

Tardy Policy

- Students who arrive late at school must sign in at the office and receive a pass to go to class. The office will record and determine whether a tardy is excused.
- Teachers will establish and apply tardy policies for their courses and record tardiness accordingly.
- Students will receive detention on the fourth school-wide tardy and for each tardy thereafter within a quarter.

Leaving Campus

Students who leave campus without permission will be considered unexcused for classes missed. For circumstances requiring a student to leave campus during the school day, students and parents should follow these protocols:

- Students must sign out at the office to leave campus and sign in at the office upon return.
- For an appointment, a parent must contact the school office at the beginning of the school day.
- For an unforeseen event, a parent must notify the office before a student may leave campus.
- In case of illness, the student must report to the office to contact a parent for permission to leave campus.

Off-Campus Senior Lunch Privilege

Seniors with this privilege must follow school guidelines and check out/sign in at the office. Unaccompanied off-campus lunch is only a senior privilege; students in grades 9-11 must be accompanied by one of their parents to be excused for off-campus lunch.

Senior Release Policy

Seniors may request to be regularly excused from particular periods for work release or other parent-based reasons. They must complete the appropriate form available in the office for final approval.

Student Services

Counseling, College, and Career Guidance

Guidance and counseling services are available in the Guidance Center. The services are confidential and available on a walk-in basis or by appointment throughout the week. The types of counseling provided are personal, educational, vocational, testing, and financial aid. The Guidance Center offers resources to support students throughout their high school academic journey and beyond, including guidance on next steps after graduation.

Student Academic Services (SAS)

Course, Academic Modifications, Educational Testing

Lynden Christian School provides accommodations or modifications in accordance with the Americans with Disabilities Act. To qualify, students must have educational testing completed through the Student Academic Services and provide LCS with a psychoeducational evaluation completed within three academic years prior to entering high school. Documentation provided to LCS will be kept confidential and will be used solely to determine accommodations/ modifications or other support services.

Student Support Plans (SSP)

Students with professionally assessed learning needs are provided with a Student Support Plan through Student Academic Services. The SSP will indicate any approved classroom accommodations or modifications necessary for student success and document the student's learning weakness and date of diagnosis. The student's current teachers will be given a copy of the Student Support Plan. It is the student's responsibility to request approved accommodations from teachers.

FACTS

FACTS is online software used for student records, report cards, and transcripts. Teachers can also communicate with parents and students through FACTS SIS. Information about login procedures is given during orientation and registration.

LCHS Student Life

School Traditions.....

Colors: blue and white

Mascot: the lynx

School Spirit Rock

Members of our school community decorate this rock to build school spirit. The rock is located in front of the high school building.

Alma Mater - Lynden Christian Forward

*Lynden Christian, forward
is our marching cry.*

*For Jesus is our captain; His power we testify.
To love is what He bids us; to serve must be our goal.
Then shout the title boldly – Lynden Christian High!*

*Lynden Christian upward
Is our Leader's cry*

*And as we love our Savior, we work to sanctify
Our bodies in His service; our spirits in His praise.
Then bear the emblem proudly – Lynden Christian High!*

Audio/Video Link:

<https://youtu.be/Sf0FRKy3wVA>

Extracurricular Activities

Lynden Christian encourages students to participate in extracurricular activities, offering a wide variety of options in athletics, art, drama, music, and clubs. For detailed information on offerings, contact the Athletics and Activities Directors.

Eligibility

A student must have passing grades in 6 of 7 classes for freshmen, sophomores, and juniors, and passing grades in 5 classes for seniors on track to graduate. Returning to participate, play, or perform depends on a passing grade in the course(s) previously marked as failing.

Attendance Requirements

To participate in a practice or contest/performance, a student must have attended school the entire day of the event. Exceptions are:

- Pre-arranged excused absence on file in the office (i.e., medical/legal appointment, funeral, school-sponsored events).

- Signed statement from a doctor verifying an appointment.
- Approval from the Activities Director or Building Administration.

Eligibility Related to Grades

The Athletic Director and Activities Director check student grades regularly during each quarter to determine student eligibility to participate in these extracurricular programs. Students are notified when they are ineligible or on probation.

Behavior Requirements

- Students participating in activities must meet the guidelines of the Athletic Activities Code (Appendix J). This agreement, signed by the student and their parent or guardian, must be completed before participation is permitted. Infractions of this code will be reported to the administration and may result in further disciplinary action.

Medical Requirements

- A valid physical form filed with the Athletic Director’s office
- Insurance Waiver form

Interscholastic Team Levels: Varsity (V), Junior Varsity (JV), and C Team (C)

	Fall	Winter	Spring
Boys	Football (V, JV, C) Cross Country	Basketball (V, JV, C)	Golf (V & JV) Baseball (V & JV) Soccer (V & JV) Track
Girls	Volleyball (V, JV, C) Cheerleading (V) Soccer (V & JV) Cross Country	Basketball (V, JV, C) Cheerleading (V)	Fast Pitch (V, JV, C) Track

Public School Athletic Participation

- Students may participate in selected sports not offered at Lynden Christian that are offered by the public district of residence. For information on this program, please contact the Athletic Director’s office.

Other Athletic Activities Requirements

- Students participating in activities must be registered for a minimum of four classes per semester at LCHS, in addition to at least two approved courses from an accredited institution.
- Students should meet with the Athletic Director to ensure the WIAA guidelines are followed.

Student Leadership

LC offers numerous student leadership opportunities. This includes: ASB, Student Council, FFA, athletic teams, and other school organizations. Leadership positions are a privilege and require students to maintain integrity, strong academics, and commendable attitudes and behavior. Students must be full-time status and may be suspended or removed from leadership positions at the administration's discretion.

School Publications

HS Daily Bulletin

The high school produces a daily bulletin, which is available on the school app. It features high school announcements, activities, and opportunities.

Final Forms

All students must fill out/sign forms in Final Forms regardless of their participation in athletics or activities. Final Forms is also used to help students sign up and monitor their eligibility for athletics or activities.

Lyncs Lines

The school publishes Lyncs Lines each week to provide updates on PK-12 school activities and opportunities. It is also available online on the school website.

Excelsior

The high school yearbook is created each year by students enrolled in the yearbook class. It is available for purchase to students and families.

Lynden Christian School App

Download and create a profile in this app to keep up with the latest school updates about general information, the school calendar, Schoology, report cards, athletics and activities, the newsletter, and so much more!

Student Transportation

Bus Transportation

Bus transportation is available to all students. Parents/guardians are encouraged to use this service as much as possible and should contact the Transportation office for arrangements. Students are required to comply with the bus rules and expectations.

Student Vehicles

Students who utilize personal vehicles to come to school are expected to comply with the following policies:

- *Non-motorized* (bikes, skateboards, etc.)

Students must use the designated rack storage areas in the courtyard.

Items, such as skateboards, must be secured in a locker for the duration of

the school day.

- *Motorized*
 - On-campus parking is for 11th and 12th grade drivers. 9th and 10th grade drivers may park on-campus if available.
 - Students may park only in designated or assigned areas
 - Students must register each vehicle to park on campus and display a parking tag on their vehicle at all times.
 - Students must drive safely in parking areas and on streets near campus. They should travel no faster than 10 mph and drive in a safe manner for pedestrians and other vehicles.
 - Parking violations will result in a fine, suspension of privileges, or other disciplinary actions based on administrative discretion.

Associated Student Body (ASB) ID Card

This non-transferable card is used for student identification and provides free access to most regular-season home athletic contests, as well as reduced costs to many athletic events at other schools. Replacements will incur a fee.

School-Sponsored Functions

All classes, organizations, or other school-sponsored functions and events must be approved by the administration, supervised by approved staff members (or volunteers), and follow school policies.

Lost and Found

Misplaced items should be brought to the office. Students should accurately identify it while claiming it. These items are donated at the end of each quarter.

Fees and Fines

In addition to tuition, the school receives fees and fines, which include ASB cards, class dues, and curricular fees. Fines may be collected for library book returns, property damage, parking violations, etc. Non-payment or delay in payment could result in the restriction of participation in a program.

Chapel

Chapel is important to LCHS and is required for all enrolled students. Chapel is typically held in the Worship and Fine Arts Center (WFAC) on Tuesday mornings.

Lunch & Snacks

Students are expected to bring their lunch and snacks. Vending machines are available. If students forget their lunch, they may call home between class periods to request someone to bring their lunch. They will not be excused from school to get it. Students may eat in any open classroom or designated area and are expected to clean up spills and dispose of trash in the proper receptacles.

Visitors

If a student wishes to bring a visitor to class, the administration must give permission in advance. If a parent or guardian wishes to visit their student's class, the administration must approve, and the teacher(s) be notified of the visit. Each visitor must check in at the office, wear a visitor's lanyard, and comply with school rules.

Building & Equipment Use

Students are expected to show maturity, responsibility, and stewardship when caring for our building, grounds, property and equipment. We expect all students to support the maintenance department in sustaining excellent standards of cleanliness.

LCHS Building Map – Appendix H

Please go to [Appendix H](#) to view the LCHS Building Map.

Use of Facilities

If a student would like to use school equipment or space, check with the teacher responsible for that area and get permission from the office before use. Students are not allowed in the facility without adult supervision.

Bookstore

Students are required to lease their own textbooks and class materials. The bookstore will be open at specified times to help you lease books.

Library

The library assists students and teachers in locating and utilizing both digital and physical materials for their projects and assignments. It also encourages reading for enjoyment. The library may be used for working on projects, printing documents, studying individually or in small groups.

Worship and Fine Arts Center (WFAC)

Anyone who wishes to use the Worship and Fine Arts Center must contact the Activities Director and obtain approval.

Lockers

Lockers are LC property temporarily assigned to students for books and personal belongings. Students are to use only the locker assigned by the office. Writing on lockers, stickers, or damaging tape is not permitted. Students may display decorations or pictures consistent with LC values. Lockers and personal possessions therein may be inspected or searched at any time for cleanliness, missing property, vandalism, and illicit materials. PE teachers/coaches may assign lockers for students in PE classes and/or on athletic teams.

Safety and Security

Student Campus Access Permissions

Permission to Access Campus

Students need permission to be in any part of campus when not under the supervision of a classroom teacher. This includes but is not limited to, the parking lot, WFAC, side study rooms, locker rooms, gymnasium, fitness center, shop, closets, storage rooms, and music practice rooms.

Designated Campus Time

Students should not be at school before 8:00 am after 4:00 pm on school days (or at any time on days when school is not in session) unless they are directly supervised by a staff member acting under official school duties. Coaches or teachers in charge of activities before or after school will open and lock the appropriate door. Students present on school property without proper supervision or permission will be considered trespassers.

Loitering

Loitering on campus is prohibited. Students must leave campus 15 minutes after home games or following the return of buses from away games. In addition to security and safety considerations, our no loitering policy aims to maintain a healthy community with neighbors.

Medications

For students who require medication during school hours (including over-the-counter medicines), school policy and state law require that the necessary forms for administering medication be on file in the school office. Forms must be completed each year by the parent and physician. Students may not possess medication at school, and school personnel may not dispense medication without the appropriate permission that the completed forms provide. The school does not allow the presence or use of medical marijuana on campus. Forms and copies of the policy are available in [Final Forms](#).

Defibrillator

Defibrillators are in the student lounge, the gymnasium outside the training room, and in the Strength and Fitness Center (upper stairwell and lower cabinet).

Drills: Hold, Secure, Evacuation, Lockdown

LC will regularly practice fire, earthquake, shelter-in-place, or intruder/lockdown drills. An all-campus evacuation will be conducted at least once per year.

Students must always take their designated rounds from the building in an orderly manner. Below are the signals for each type of event:

- A fire or evacuation will be indicated by an audible alarm.
- Intercom announcements on the PA system indicate the type of drill or event.

Technology in School

Acceptable Use Policy – Appendix G

Audio/Video/Photograph Recording Policy

- Students may not record (audio/video) or photograph without permission and consent at any time on campus. Recording classroom activities is permitted only with the classroom teacher's permission and supervision for education-related activities. Audio/video recording or photography in bathrooms or locker rooms is always prohibited. Publication or posting of pictures and recordings is prohibited and may be referred to the appropriate law enforcement agency.

Social Media

- Inappropriate messages, postings, and images may be reviewed by school officials. There is no expectation of privacy for posts or images on social media sites.

Weapons

The possession and use of any weapon will be a Category C offense, and consequences will be addressed in this handbook's "Student Conduct and Discipline" section.

Student Conduct and Discipline

Our mission statement declares, “We seek to educate children and young people so that they may grow and mature into perceptive and caring Christians.” The philosophy of student discipline is based on the belief that while each child bears God’s image, they are fallen and have marred that image. LC desires that students become followers of Jesus Christ by first seeking the kingdom of God, which then informs how they interact with, and love, others. We believe the task of the staff and school policy is to encourage movement towards Christian maturity and develop a healthy partnership with parents in this process.

Goals

- To encourage a growing relationship with Jesus
- To create a safe and healthy environment
- To support instruction and encourage learning
- To respect others
- To foster righteous living and promote a life of integrity
- To provide opportunities for growth and grace
- To develop citizenship, servant leadership, and life skills
- To instill courage in the pursuit of justice

Categories of Conduct

The policies below apply to the school day and all school-related activities. Although Lynden Christian does not routinely monitor students’ off-campus behavior or online activity, the school reserves the right to apply its values and conduct policies to student behavior that occurs online or off-campus, not during regular school hours. Conduct addressed under the Activities Code may additionally be addressed under this conduct policy.

Category A - Conduct undermining an orderly, safe, healthy school environment.

Students who engage in this conduct should expect to meet with an administrator and receive consequences such as detention, loss of privilege, or other consequences that relate to the offense and are proportional to it.

Examples include:

- Tardiness
- Unexcused absence
- Littering
- Dress Code infraction
- Parking infraction
- Entering off-limits areas

- Inappropriate display of affection
- Unauthorized use of cell phone or electronic device
- Gambling
- Disruption
- Nuisance items (water pistols, lasers, lighters, etc.)

Category B - Conduct that undermines the integrity of the educational program or shows disrespect for others. Students who engage in this conduct should expect to meet with an administrator and receive one or more of the following consequences: loss of privilege (may include extracurricular activities), removal from class, office restriction, fines, suspension, disciplinary contract, dismissal from school, or other measures deemed appropriate by the administration.

Examples include:

- Continued or significant Category A conduct
- Academic integrity violation
- Vandalism or destruction of property
- Fighting
- Trespassing
- Inappropriate communication or behavior (online or offline)
- Disrespect toward others
- Significant disruption
- Insubordination
- Interference with teaching and learning
- Violation of the technology [Acceptable Use Policy](#)
- Endangerment of self or others (e.g., unsafe operation of a vehicle)
- Inappropriate use of social media

Category C - Conduct which is contrary to Christian ethical living. Students who engage in these behaviors should expect to meet with an administrator, superintendent, or the school board (depending on the severity of the conduct and related consequences). The administration will determine disciplinary actions, which may include the following: dismissal or expulsion, suspension, counseling, pastoral guidance, restitution, fines, legal action, notification to legal authorities, disciplinary contract, denial of graduation/diploma, denial of re-enrollment, or other measures deemed necessary by the administration. Disciplinary consequences will seek to protect the needs of victims and/or the student body.

Examples include:

- Continued or significant Category B conduct
- Possession, purchase, distribution, or use of illicit drugs, alcoholic beverages, tobacco products, and paraphernalia
- Improper use of legal or harmful substances
- Stealing

- Lying
- Harassment, hazing, bullying, and threats (see [Appendix I](#))
- Physical assault
- Possession, distribution, or use of guns, knives, weapons (or facsimiles)
- Sexual activity contrary to biblical standards
- Profane, vulgar, obscene, demeaning, or sexually explicit behavior or communication
- Creation, possession, distribution, or use of generated or falsified images, voices, representations, or communications (e.g., deep fakes, use of AI)
- Possession, distribution, use, or solicitation of any form of pornography
- Legal arrest, charge, or conviction of a misdemeanor or felony offense occurring on or off campus

Bystander Responsibilities

A person's choices and actions can either uplift or degrade our school culture based on Christian principles. Scripture provides many examples of how God expects his children to courageously stand for justice, protect the innocent, and care for those who are victims. LC's mission expressly calls for our students to become transforming influences in the world. Therefore, students are expected to stand up against the harmful actions of others. This can be done interpersonally through conversation, and it can be accomplished by reporting others to the staff or those responsible.

Academic Integrity

Students should not plagiarize (or use content as their own without citing the original creator) from the Internet, including words or images. They may not take credit for things they did not create or misrepresent themselves as authors or creators of something found online, including AI sources. Research conducted via the Internet should be appropriately cited, giving credit to the original author. Teachers, following department guidelines, will provide specific guidance regarding the application of plagiarism. Academic Integrity violations are tracked by the administration.

Cell Phone Policy

- Cell phones (including similar devices with internet access) may not be used during the school day and are expected to be turned off and stowed away during school hours - including breaks and lunch.
- If a student has not followed this expectation, staff will collect the student's cell phone and give it to the school office. The student may pick up the device at the end of the school day and/or receive additional consequences for multiple infractions.

Disciplinary/Behavior Plans

A disciplinary/behavior plan helps students improve behaviors according to LC's community standards. The following process will normally be followed:

- A disciplinary/behavior plan will be written at the discretion of the school administration.
- The plan will describe the behavior problem and the conditions and expectations for improvement.
- A behavior plan may specify that the student on probation will not represent Lynden Christian as a member of any team, organization, activity, or group.

Detention

Detention will be held at times designated by the school. Students will be notified when they have detention and where/when to report. Students over ten minutes late or failing to report for detention will be assigned two more detentions.

Suspension

A student may be suspended for violating school standards. When possible, in-school suspensions will be used. On the day of an in-school suspension, the student must report to the office by 8:30 am and is expected to complete academic work during this time. Students suspended from school are not permitted to participate in after-school practices, rehearsals, performances, or athletic contests on the day(s) of the suspension. A reentry meeting with parents, administrators, and/or teachers may be required. Suspension is considered an unexcused absence. Therefore, a grade reduction penalty may be applied. In-school suspension may include a fee to help offset the cost of supervision.

Expulsion

Students may be expelled (or be given the opportunity to withdraw) if they engage in significantly harmful behavior, cause significant distraction, discredit the school, or do not respond well to corrective measures. A student who has lost the privilege to attend Lynden Christian School will not be permitted on campus or attend school-related events on or off campus. Examples for expulsion include, but are not limited to:

- Possession, use, or distribution of controlled substances of any kind, or the misuse of any prescribed drugs of any kind, on or off school property
- Possession, consumption, supply, or sale of alcohol, tobacco, or tobacco-related products, including vaping devices, on school property or at school-sponsored events
- Repeated violations or patterns of misbehavior
- Failure of parents to cooperate with the school in disciplining their children
- Actual or implied threats related to the school environment and/or to people; assault or battery of a teacher or student
- Sexual misconduct, including sexual contact or activity outside of marriage
- Abuse or bullying
- Possession, distribution, or use of pornographic materials
- Sexual harassment or other sexual misconduct, including communication of sexual innuendo and/or gestures
- Possession, distribution, or use of guns, knives, or weapons, or facsimiles of weapons

Searches

The administration recognizes that incidents may occur that jeopardize the health, safety, and welfare of students and staff, necessitating the search and seizure of students, their property, cars, lockers, cell phones, or any other electronic device by school officials. Students shall be free from unreasonable searches and seizures by school officials. School officials may search a student's outer clothing, pockets, or property by establishing a reasonable cause or securing the student's voluntary consent. The search is reasonable if it meets both of the following criteria:

- The action is justified at the inception; i.e. the school official has reasonable grounds for suspecting that the search will uncover evidence of a violation.
- The scope of the search is reasonably related to the circumstances that justified the search in the first place, i.e., the measures adopted are reasonably related to the purposes and are not excessively intrusive in light of the age and gender of the student and the nature of the infraction.

Dress Code Policy

Lynden Christian's high school dress code and appearance guidelines encourage students to practice Biblical discernment, respect, and modesty; these policies also promote a consistent, helpful, and safe learning environment for all students. Decisions of dress and personal appearance are primarily a family responsibility; parents should encourage and guide their children's clothing choices by following the requirements below. These expectations apply to school days, field trips, school pictures, and other school-day activities. For further questions or clarification, please contact the administration.

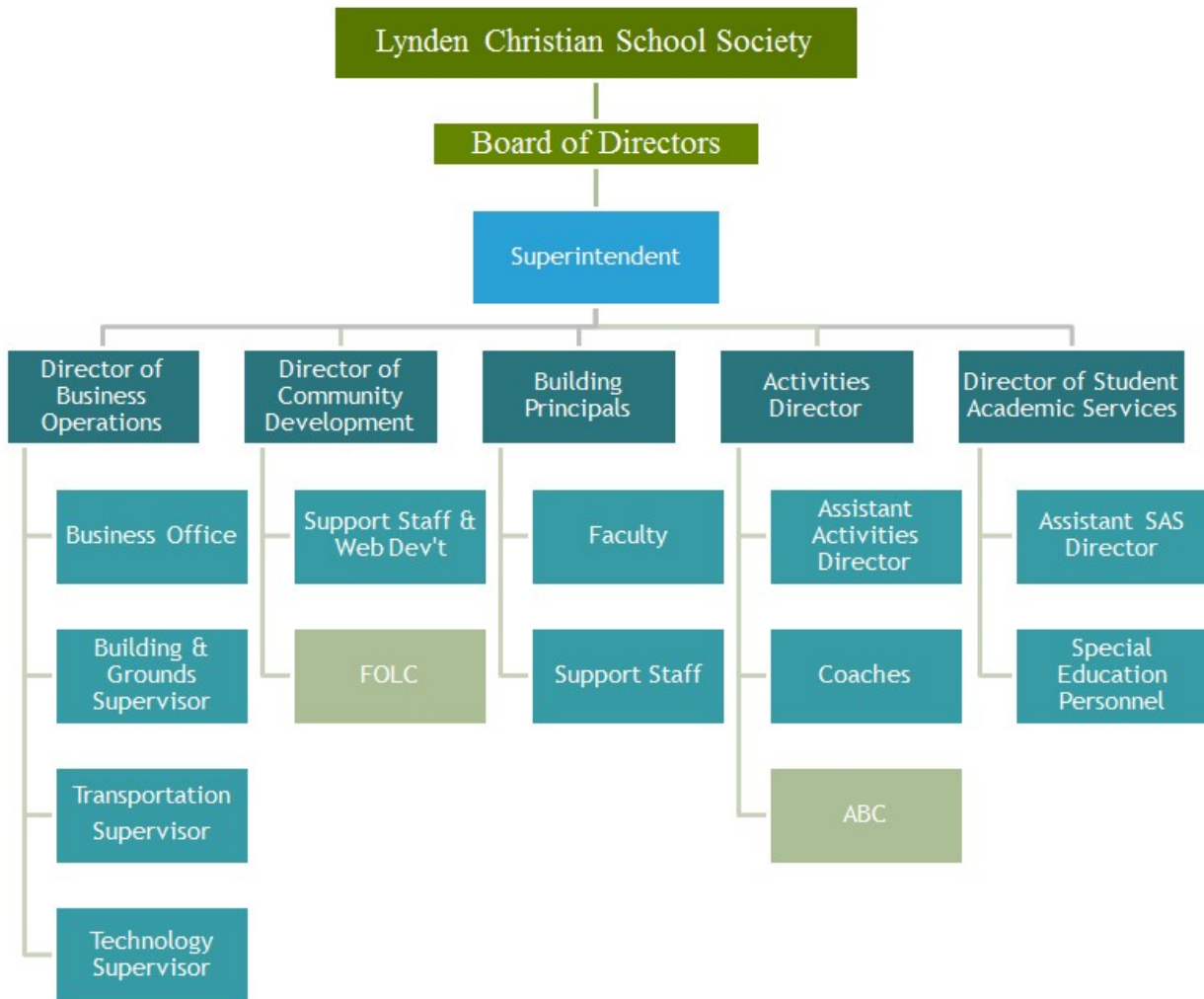
- Students should wear clothing that appropriately covers the body; they may not wear revealing clothing. Examples of inappropriate clothing include:
 - short shorts and skirts (must be finger length or longer with fingers fully extended)
 - visible undergarments, low necklines, crop tops, halter tops, shoulder straps narrower than two inches
 - garments that show the midriff or have revealing holes
 - excessively tight or revealing pants, including leggings (should be worn with a top that covers the backside)
- Students must wear safe and comfortable shoes.
- Clothing may not display or promote inappropriate images or messages. Examples include alcohol, drugs, tobacco, and images that depict violence, intimidation, racism, ridicule, sexism, gang symbols, and offensive language.
- Hats may be appropriately worn at the discretion of the administration and teachers.
- Artificial hair coloring should be a natural hair color.
- Visible tattoos and body piercings may not be distracting.

Students not following these guidelines must make the appropriate changes before returning to class. Students who leave campus to change apparel will receive an unexcused absence for missed classes.

Appendices

Appendix A – LCS Organization Chart

LCS Organization Chart.....



Appendix B – LCHS Faculty & Staff

LCHS Faculty & Staff

Mrs. Brooke Barron	Science
Mrs. Amy Blankers	Math, ASB
Mr. Brady Bomber	Athletic Director
Mrs. Lyza Brady	Plant Operations
Mrs. Mandy Bratt	Physical Education
Mr. John Burmeister	PE
Mr. Richie Chapin	Custodian
Mrs. Jayleen Corkill	SAS Discovery Therapist
Mrs. Shelly DeJong	CTE Horticulture/Floral Design
Mrs. Niki DeYoung	Math
Mrs. Janelle Draayer	Social Studies
Mrs. Melissa Engels	English
Mrs. Hannah Faber	Nurse
Mrs. Lauren Faber	SAS Para Educator
Mrs. Laura French	Fall Drama and Spring One Act Director
Mr. Mark French	CTE Yearbook/Art/A/V
Mrs. Jasmine Fritsch	SAS Para Educator
Mrs. Becky Gerlach	Chapel Worship Team Coordinator, Pianist
Mr. Matthew Gudakov	Orchestra
Mrs. Kayla Heatwole	Counselor
Mrs. Melanie Heldoorn	SAS Guided Study/English
Mrs. Kristen Hinton	Math
Mr. Paul Huffman	Science
Mrs. Catherine Huggins	Athletics/Activities Administrative Asst.
Mrs. Kelly Kaemingk	Math
Dr. Kevin Kaemingk	Principal
Mrs. Hannah Keen	English
Mrs. Jill Kocourek	CTE Business/Consumer Science/FFA
Mrs. Alyssa Kooi	Social Studies
Mr. Harlan Kredit	Game Manager
Mrs. Lyndsey Lenssen	Nurse
Mrs. Janna Libolt	Office Administrative Assistant
Mr. Nate Lynch	SAS Para-Educator

Mrs. Melissa Meyer	Guidance Counselor/CTE Director
Ms. Aliyah Moa	Librarian
Mrs. Carol Morgan	Spanish
Mrs. Jamie Nichols	Business
Mrs. Laura Ogle	English
Dr. Nathaniel Olson	Assistant Principal, Activities Director
Mrs. Camille Price	Social Studies
Mr. Kenneth Quehrn	Band
Mrs. Tina Ralston	Custodian
Mrs. Bronwyn Riggins	Winter Musical Director
Mrs. Nicole Roetcisoender	Science
Mrs. Shauna Senti	Spanish
Mrs. Heidi Slagle	Choir
Mr. Gavin Thompson	English
Mr. Dave Tjoelker	Bible
Mr. Josh Turner	CTE Shop/CAD
Mrs. Richelle Urie	Registrar/Administrative Assistant
Mrs. Carla Vander Kooi	SAS Inclusion Specialist
Mr. Ron Van Der Pol	Art
Mrs. Amy Vande Voort	SAS Discovery Director
Mr. Jon VanHulzen	Bible
Mr. Chad Van Ry	CTE Shop
Mrs. Cheryl Westra	Greenhouse Assistant
Mrs. Sara Whitehead	Guidance Counselor/Science

Appendix C – Key School Board Policies

Critical Issues/Conflict-Resolution

Theological and Educational Foundations

- **The Holy Scriptures provide the basis for how LC handles controversy.**

Lynden Christian Schools and the Board of Directors have adopted several additional documents that guide the educational program. These resources include:

- **The Three Forms of Unity:** The Belgic Confession, the Heidelberg Catechism, and the Canons of Dordt
- **Our World Belongs to God:** A contemporary testimony that states our faith and theology
- **Constitution and By-laws:** The most fundamental statements of purpose and theology that motivated the formation of Lynden Christian Schools and govern its ongoing existence
- **Lynden Christian Schools – Philosophy, Goals, and Objectives:** This provides theological and educational presuppositions.
- **Christian Schools International Publications:** From Vision to Action and 12 Affirmations 2.0 These documents developed the basis and purposes of what Reformed Christian schools can and ought to be.

Biblical Conflict-Resolution

Scripture guides Christians to respond to controversy and disagreement in ways that seek resolution, reconciliation, and unity among believers. Sin crouches at our doors during times of conflict. The following steps summarize Biblical expectations (further explanation and scripture references are available on the school website).

- First Step: Preparation.
 - Become spiritually focused (Galatians 6:1)
 - Look at the log in your own eye (Matthew 7:3-5)
 - Pray forgiveness and blessing (Colossians 3:13)
 - If possible, choose to overlook an offense (Proverbs 19:11)
- Second Step: Face to Face
 - Go quickly to the person, in person, to be reconciled. Each word of this step is essential. (Matthew 5:23-26 and 18:13-15)
- Third Step: Be steadfast in reconciliation
 - We respond to sin by giving and seeking forgiveness (Ephesians 4:32)

- We respond to disagreement by pursuing understanding and peace (Ephesians 4:1-3, Romans 12:18). If disagreement remains, we choose to live peaceably without hindering our relationships.
- We cultivate humility and love (Phil. 2:3-4, Romans 12:10-18).

Student Responsibility

- Pray for wisdom and guidance from the Lord.
- Listen carefully to avoid misunderstanding controversial content and ask thoughtful questions to clarify misunderstandings or confusion.
- Discern bias to identify reliable sources for information.
- Explore multiple perspectives and affirm truth wherever it is found.
- Pursue understanding through careful and empathetic listening.
- Develop curiosity and seek clarification through careful questioning, research, and the guidance of Christian thinkers.
- Think carefully in pursuit of Biblical truth and Godly wisdom.
- Readily engage in healthy discussion, seeking clarification on points of agreement and disagreement.
- Study God's Word and consider how it guides our understanding of controversial issues.
- Learn to resolve conflict in a Biblical manner.

Teachers and Grade Level/Subject Department Responsibility

- Pray for wisdom and guidance from the Lord.
- Identify/anticipate curricular topics that may be divisive or controversial and collaborate with departments and administration on how to proceed.
- Identify and incorporate Biblical guidelines/principles essential to the subject and helpful to students in developing a Christian worldview.
- Plan instruction, activities, and pace to minimize student misunderstanding of challenging topics in the context of a classroom where there may be tension or disagreement.
- Establish essential points of common ground based on scripture and identify areas where Christians hold differing positions. Students should be given clarity on positions supported by the proper understanding and application of scripture.
- Develop a parent communication/feedback plan at the beginning of the year and reinforce this at key times during the year.
- Help students form healthy discussion habits in a grace-filled context.
- Create a safe learning environment for exploring complex issues.
- Follow Biblical Conflict Resolution principles when disagreements arise.
- Consider using resources and ideas offered by community members

where appropriate and helpful.

- Adjust instruction to the developmental needs and readiness of students.
- Select, in consultation with department colleagues and administration, appropriate curricular materials and resources.

Administration Responsibility

- Pray for wisdom and guidance from the Lord.
- Identify curricular topics that may be divisive or controversial.
- Guide teachers and staff when (if) to share personal views.
- Help students have appropriate Biblical closure.
- Foster respect in disagreement.
- Selecting learning materials.
- Facilitate conflict resolution training for school personnel.
- Provide clarity or guidance on critical issues or situations with staff.
- Foster community communication.
- Foster institutional consistency regarding the instruction of controversial issues taking into consideration the developmental levels in students.
- Articulate the value of researching, understanding, and evaluating different perspectives in the educational context.
- Ensure Biblical Conflict Resolution principles and school protocols are followed when complaints or concerns arise.
- Research and provide parent and community resources.
- Share important documents and policies with the school community.
- Inform the Board about issues that arise.
- Collaborate with the Board regarding the need for position statements.

Parent Responsibility

- Pray for wisdom and guidance from the Lord.
- Become familiar with LC's guiding educational principles and documents on the school website.
- Become familiar with course information and materials shared by teachers.
- Seek clarification or address questions directly and privately with the teacher or staff member directly responsible for the matter of concern.
- Parents of older students should guide students in seeking clarification directly with the teacher or staff member.
- Follow the steps of Biblical Conflict Resolution when there is disagreement or the need for reconciliation.
- Support school policies and protocols.
- Establish positive and constructive communication with school personnel.
- Follow the appropriate communication steps as outlined by the

administration of each school building and by board policy.

School Board Responsibility

- Pray for wisdom and guidance from the Lord. Work with the superintendent to discuss and approve school positions on particular topics as needed.
- Direct parents and community members to pursue clarification directly with the teacher or administrator according to building policy and Biblical Conflict Resolution.
- Review Board policies to clarify appropriate channels of communication.

Church Responsibility

- Pray for wisdom and guidance from the Lord.
- Serve as a resource for positions related to theological underpinnings.
- Support the school in directing and encouraging members toward Biblical resolution.

Appendix D – Key School Board Policies

LCS Position Statement on Human Sexuality & Gender Identity

Lynden Christian School's Position Statement on Human Sexuality and Gender Identity (*rev 11/2022*)

Lynden Christian affirms that all human beings, male and female, are created in the image of God their Creator (Genesis 1:26-27), and therefore have inestimable value and must be treated with dignity and respect.

As a community that seeks to be an authentic biblical community, Lynden Christian Schools is committed to addressing all issues of human sexuality with grace and truth and recognizes that the most loving thing that we can do for our brothers and sisters in Christ is to graciously point them to the Truth of His Word. Understanding that God loves repentant sinners, including those who sin differently than we do, Lynden Christian School affirms the following interpretive framework regarding God's intent for human sexuality:

- A. God created two genders, male and female, determined biologically at birth (Genesis 2:18-25).
- B. The Creator's intent for human sexuality, based in creation and stated in the seventh commandment, finds its fulfillment between a man and a woman within the bond of the marriage covenant. To experience the fullness of God's loving intent, sexual experience is intended to be celebrated between a man and a woman within that covenant union (Genesis 2:22-24; Proverbs 5:18-19; Matthew 19:4-6; Mark 10:6-9; 1 Corinthians 7:1-16).
- C. Heterosexual practice outside the covenant of marriage and all homosexual practice is incompatible with the will of God as revealed in scripture and is sin demanding confession and repentance. The Bible's teaching regarding unchaste behavior is faithfully summarized in Heidelberg Catechism Q&A [108](#), [109](#), and [113](#) (links provided for Q&A and scripture references).
- D. Lust, including same gender and heterosexual lust, is contrary to God's created order which reveals the brokenness of our sinful world and the effect of sin on God's perfect intent for human sexuality.
- E. None of us has measured up to God's will for our sexuality, and thus we are all in need of, and able to receive, abundant grace and forgiveness through our savior Jesus Christ (Romans 6:23; Ephesians 2:8-10). God's expectation for our response to our failures and shortcomings regarding chastity, as well as our shortcomings in all other areas where we so often fail, is faithfully summarized in Heidelberg Catechism Questions [114](#) and [115](#) (links provided for Q&A and scripture references).
- F. We will communicate and uphold God's standards for human sexuality and gender identity with grace and truth.

In light of the above framework, Lynden Christian School commits itself to the following standards of Christian practice:

- A. Teaching, and expecting all Lynden Christian community members to model and abide in practice by, the Creator's intent for human sexuality and gender as

- stated above.
- B. Exercising patient understanding of and compassion for all students struggling with any issue of sexuality or gender identity.
 - C. Striving for an environment that is free from discrimination.
 - a. No student will be expelled or excluded based on his or her same gender attraction
 - b. No students will be pressured to disclose such attraction
 - D. Insisting upon an atmosphere that is a safe learning environment for all students.
 - i. Physical assault, harassment (snide remarks, jokes, innuendo, slogans, disparaging terms), or bullying on the basis of one's sexual orientation will not be tolerated. This policy extends to gestures, emails, text messages, notes and any other written or electronic form of threat or harassment.
 - ii. Gay or anti-gay militancy is regarded as incompatible with Christian community and therefore will not be tolerated.
 - iii. Inappropriate public displays of affection between couples will not be allowed.
 - E. Providing all students with the following:
 - i. A compassionate venue in which to engage in authentic dialogue about the very real, confusing, and often painful issues related to human sexuality and gender identity.
 - ii. School counselors, in partnership with the family and the student's church whenever possible, who will offer biblical guidance, resources and options for referral for counseling.
 - iii. The assurance of confidentiality from peers or other staff except in instances of suicidal ideation or other self-harming behaviors.
 - iv. An assurance that the dignity of all students and families will be guarded.
 - F. Acknowledging our own human frailty and dependence upon Christ for his humility, grace, and wisdom in our considerations of human sexuality, seeking always to love one another as He has loved us.

Lynden Christian Schools has established this Position Statement on Human Sexuality and Gender Identity for a variety of reasons:

- a. To give clarity for staff, students, and families around these topics
- b. To provide direction for instruction around these topics
- c. To protect the organization legally, particularly in areas of employment and enrollment
- d. To direct policy making

Appendix E – LCHS Daily Bell Schedule

2026-27 LCHS Daily Bell Schedule

LCHS Daily Bell Schedule									
2026-2027									
White Monday		Blue (Late Start) Tuesday		White Wednesday		Navy Thursday		Black Friday	
1st	8:30-10:00	5th ✓	9:25 - 9:27	1st	8:30-10:00	5th	8:30-10:00	1st	8:30-9:23
		Chapel	9:30-10:05					2nd	9:27-10:16
Break	10:00-10:15	Break	10:05-10:15	Break	10:00-10:15	Break	10:00-10:15	Break	10:16-10:26
2nd	10:15-11:40	5th	10:15-11:40	2nd	10:15-11:40	6th	10:15-11:40	3rd	10:26-11:15
								4th	11:19-12:08
Lunch	11:40-12:10	Lunch	11:40-12:10	Lunch	11:40-12:10	Lunch	11:40-12:10	Lunch	12:08-12:38
3rd	12:10-1:35	6th	12:10-1:35	3rd	12:10-1:35	7th	12:10-1:35	5th	12:38-1:27
Break	1:35-1:45	Break	1:35-1:45	Break	1:35-1:45	Break	1:35-1:45	6th	1:31-2:20
4th	1:45-3:15	7th	1:45-3:15	4th	1:45-3:15	Plus Time A	1:45-2:25	7th	2:24-3:15
						Plus Time B	2:30-3:15		

Appendix F – School Calendar

2026-27 School Calendar



Lynden Christian School

2026-2027 Days Off Calendar

Board Approved 2/2026

August '26						
S	M	T	W	T	F	S
						1
2	3	4	5	6	7	8
9	10	11	12	13	14	15
16	17	18	19	20	21	22
23	24	25	26	27	28	29
30	31					

Aug 26: Staff Breakfast/Worship, Building Meetings
 Aug 27: Pro-D
 Aug 28: Teacher Work Day/ Building Meetings
 Aug 31: Teachers work day/ Open House 1/2 Day

September '26						
S	M	T	W	T	F	S
		1	2	3	4	5
6	7	8	9	10	11	12
13	14	15	16	17	18	19
20	21	22	23	24	25	26
27	28	29	30			

Sep 1: First day of school-1:30 PM Dismissal
 Sep 7: Labor Day—No School

October '26						
S	M	T	W	T	F	S
				1	2	3
4	5	6	7	8	9	10
11	12	13	14	15	16	17
18	19	20	21	22	23	24
25	26	27	28	29	30	31

Oct 30: Teacher Pro D/Work Day—No School

**For the 2026–2027 school year, we will have a half day on Veterans Day and will hold an assembly to honor our veterans.

November '26						
S	M	T	W	T	F	S
1	2	3	4	5	6	7
8	9	10	11	12	13	14
15	16	17	18	19	20	21
22	23	24	25	26	27	28
29	30					

Nov 11: Early Release 12 PM / Parent/Teacher Conferences PM
 Nov 12: Early Release 12 PM / Parent/Teacher Conferences PM
 Nov 13: No School / Parent/Teacher Conferences AM
 Nov 25: Early Release 12 PM
 Nov 27-28: Thanksgiving Vacation—No School

December '26						
S	M	T	W	T	F	S
		1	2	3	4	5
6	7	8	9	10	11	12
13	14	15	16	17	18	19
20	21	22	23	24	25	26
27	28	29	30	31		

Dec 18: 12:00 PM Release
 Dec 21–Jan 1 Christmas Vacation

January '27						
S	M	T	W	T	F	S
					1	2
3	4	5	6	7	8	9
10	11	12	13	14	15	16
17	18	19	20	21	22*	23
24	25	26	27	28	29	30
31						

Jan 4: Return to School—Welcome Back!
 Jan 18: Martin Luther King Day—No School
 Jan 22: Work Day: No School—end of Semester

February '27						
S	M	T	W	T	F	S
	1	2	3	4	5	6
7	8	9	10	11	12	13
14	15	16	17	18	19	20
21	22	23	24	25	26	27
28						

Feb 15: Presidents' Day—No School

March '27						
S	M	T	W	T	F	S
	1	2	3	4	5	6
7	8	9	10	11	12	13
14	15	16	17	18	19	20
21	22	23	24	25	26*	27
28	29	30	31			

Mar 4-5: Mid Winter Break—No School
 March 26: Teachers Pro D 1/2 Day—Good Friday No School

April '27						
S	M	T	W	T	F	S
					1	2
4	5	6	7	8	9	10
11	12	13	14	15	16	17
18	19	20	21	22	23	24
25	26	27	28	29	30	

Apr 5-9: Spring Break—No School

May '27						
S	M	T	W	T	F	S
						1
2	3	4	5	6	7	8
9	10	11	12	13	14	15
16	17	18	19	20	21	22
23	24	25	26	27	28	29
30	31					

May 7: 5B: High School Only Half Day—12PM Release
 May 17: Senior Presentations—Early Release at 12 PM
 May 31: Memorial Day—No School

June '27						
S	M	T	W	T	F	S
		1	2	3	4	5
6	7	8	9	10	11	12
13	14	15	16	17	18	19
20	21	22	23	24	25	26
27	28	29	30			

June 10: Last day of School—P-12 Early Release 12:00 PM
 June 30: High School Graduation
 June 11: Staff Breakfast-Teacher Work Day

Key

Beginning of the Year	School Days Off
Parent/Teacher Conference No School	Early Release
High School Only	Teacher Pro-D No School
End of the Year	Teacher Work Day—No School
End of Grading Period	High School Graduation
Late Start: School Starts at 9:00 AM	

Appendix G – Acceptable Use Policy

Acceptable Use Policy

Introduction

Lynden Christian High School recognizes that the appropriate technology gives students greater opportunities to learn, engage, communicate, and develop skills that will prepare them for vocation, life, and citizenship. We are committed to helping students develop 21st-century technology and communication skills. LCHS's network, hardware, and software are available to students, staff, and guests for appropriate use. The use of this technology, whether LCHS devices or those using the LCHS network, requires personal responsibility and compliance with LCHS policy. Users are expected to comply with LCHS rules, act responsibly, and honor the terms and conditions set by the classroom teacher and the school.

Technologies Covered

This Acceptable Use Policy outlines the guidelines and behaviors that all users are expected to follow when using the following technology: internet access, desktop computers, mobile computers, tablets, cellphones, or other devices, video conferencing equipment, LMS programs, online collaboration services, hardware, software, message boards, email, and anything related to technology. This policy applies to school-owned technology equipment and/or privately-owned devices utilizing the LCHS network, LCHS Internet connections, and/or private networks/Internet connections accessed from devices while on school campus, busses, or events. The policies also apply to future technologies purchased or provided by the school.

- The LCHS network is intended for educational purposes.
- All activity over the network or using district technologies may be monitored and retained.
- Access to online content via the network may be restricted in accordance with our policies.
- Students are expected to follow the same rules for good behavior and respectful conduct online as they do offline.
- Misuse of school resources and/or property can result in disciplinary action.
- LCHS makes a reasonable effort to ensure students' safety and security online but will not be held accountable for any harm or damages that result from the use of school technologies. Every user must take responsibility for his or her use of technology and make every effort to avoid inappropriate types of content.
- Users of the district network or other technologies are expected to

alert LCHS immediately of any safety and/or security concerns.

Usage Policies

All users are expected to use good judgment and to follow the specifics as well as the spirit of this document: be safe, appropriate, careful and kind; refrain from circumventing the school protection measures; use common sense; and seek help or permission from the school's designated authority. A "user" is defined as anyone, including employees, students, and guests on campus or attending any school-related activity.

Web Access

LCHS provides users with the privilege of internet access, including websites, resources, content, and online tools. Access to the internet will be restricted as required to comply with school policies. Web browsing may be monitored, and web activity records may be retained indefinitely. Users are expected to respect the web filter as a safety precaution and shall not attempt to circumvent the web filter when browsing the Internet. The determination of whether material is appropriate or inappropriate is based solely on the content of the material and the intended use of the material, not on whether a website has been blocked or not. If a user believes a site is unnecessarily blocked, the user should submit a request for website review to the school IT director or administration.

Email/Social/Web/Collaborative Content

LCHS may provide users with the privilege of email accounts and access to websites and tools that allow communication, collaboration, sharing and messaging among users for school-related communication. Availability and use may be restricted based on school policies. If users are provided with these communicative abilities, they should be used with care. Users should not attempt to open files or follow links from unknown or untrusted origins; should use appropriate language; and should only communicate with other people as allowed by the district policy or the teacher. Users are expected to communicate with the same appropriate, safe, mindful, courteous conduct online as offline. Email usage, posts, chats, sharing and messaging may be monitored and archived.

Security

Users are expected to take reasonable safeguards against the transmission of security threats over the school network. This includes not opening or distributing infected files or programs and not opening files or programs of unknown or untrusted origin. If a user believes a computer or mobile device might be infected with a virus, they must alert the LCHS administration or the IT director. Users should not attempt to remove the virus or download any programs to help remove the virus.

Personal Safety

Users should never share personal information, including phone number, address, social security number, birthday, or financial information, over the Internet without adult permission/supervision. Users should recognize that communicating over the Internet brings anonymity and associated risks and should carefully safeguard the personal information of themselves and others. Users who see a message, comment, image, or anything else online that concerns personal safety, should bring it to the attention of an adult (teacher, staff, or parent) immediately. Users should remember not to post anything online that they would not want students, parents, teachers, or future colleges or employers to see. Once something is online, it is out there—and can sometimes be shared and spread in ways never intended.

Examples of Acceptable Use

Users are expected to:

- Use school technologies for school-related activities.
- Follow the same guidelines for respectful, responsible behavior online that I am expected to follow offline.
- Treat school resources carefully and alert staff if there is any problem with their operation.
- Encourage positive, constructive discussion if allowed to use communicative or collaborative technologies.
- Alert a teacher or other staff member if I see threatening, inappropriate, or harmful content (images, messages, and posts) online.
- Use school technologies at appropriate times, in approved places, for educational pursuits.
- Cite sources when using online sites and resources for research.
- Recognize that the use of school technologies is a privilege and treat it as such.
- Be cautious to protect their own safety and that of others.
- Help to protect the security of school resources.

Examples of Unacceptable Use

Users may not:

- Use school technologies in a way that could be personally or physically harmful
- Attempt to find inappropriate images or content; intent to seek inappropriate images or content is a violation of this Acceptable Use Policy

- Engage in cyberbullying, harassment, or disrespectful conduct toward others
- Circumvent the school's safety measures and filtering tools or seek ways to circumvent safety measures and filtering tools violates this policy
- Use school technologies to send spam or chain mail.
- Plagiarize
- Post or otherwise disclose personally identifying information about themselves or others
- Use language that would be unacceptable in the classroom
- Use school technologies for illegal activities or to pursue information on such activities
- Attempt to hack or access sites, servers, or content that isn't intended for their uses

This is not intended to be an exhaustive list. Users should use their own good judgment when using school technologies.

Violations of this Acceptable Use Policy

- Violations of this policy may have disciplinary repercussions, including suspension or loss of network, technology, or computer privileges
- Notification to parents
- Detention or suspension from school and school-related activities
- Other disciplinary actions based on school values and need
- Employment disciplinary action
- Legal action and/or prosecution

Appendix I – Bullying & Harassment

Bullying & Harassment

Lynden Christian Schools promotes community and living in harmony; therefore, harassment, intimidation, or bullying are not acceptable behaviors. Our policy is written in accordance with our Biblical worldview, the State of Washington (RCW 28A.300.285), and the approval of the Lynden Christian School Board.

This policy follows our desire that all students learn to live and behave in a way that honors and respects God and neighbor; they need to learn to behave with kindness, patience, understanding, and resiliency. We know that conflict among students will happen, and we are grateful that we can deal with conflict within a Christian school and in Christ's community.

Bullying, Harassment, & Intimidation

Bullying falls into one or more of the following categories and is intentional (done on purpose), repeated (happens more than once), and often involves an imbalance of physical or social power.

- Physical bullying – an action harming another's body
- Verbal bullying – using words (or gestures) to harm someone
- Social bullying – excluding someone on purpose or controlling one's friendships through intimidation
- Cyber-bullying – bullying through the internet, cell phones, or video games

Harassment and intimidation are defined as any intentional written, verbal, electronic, or physical acts that threaten the well-being or safety of another student. This includes but is not limited to actions motivated by race, skin color, social status, gender, ability, political or religious views, or other distinguishing characteristics with the intent or the result of:

- Harming another student or damaging a student's property
- Substantially interfering with a student's education
- Creating an intimidating or threatening social, educational or extra-curricular environment
- Disrupting the order or operation of the school

There will be a school response to harassment, intimidation, and bullying. The escalation, frequency, or severity of the event(s) will determine the level of response. An essential part of this process is documentation and restoration. Responses will generally follow this progression:

- Student meeting with administration to clarify and identify the behavior

- Investigation of the incident as needed
- Review of bullying definition and policy; incident documented
- Parent notification
- Determine intervention strategies focused on changing bullying behaviors
- Possible Consequences: behavior contract, restitution, school counselor intervention, in-school suspension, out-of-school suspension, professional intervention required for continued enrollment, and expulsion

Documentation and restoration of the relationship will continue throughout every step of the process.

Cyber Bullying

Cyberbullying includes inappropriate communication. Inappropriate communication includes but is not limited to, the following: obscene, profane, lewd, vulgar, rude, inflammatory, threatening, or disrespectful language or images typed, posted, or spoken by students; information that could cause damage to an individual or the school community or create the danger of disruption of the academic environment; personal attacks, including prejudicial or discriminatory attacks; harassment (persistently acting in a manner that distresses or annoys another person) or stalking of others; knowingly or recklessly posting false or defamatory information (or images) about a person or organization; and communication that promotes the destruction of property, including the acquisition or creation of weapons or other destructive devices.

Sexual Harassment

Sexual harassment of students by other students or by employees of the Lynden Christian School is unlawful and contrary to our religious beliefs and the school's commitment to providing a stable learning and working environment. School authorities will not tolerate any sexual harassment of students and staff. This school's policy is that all contact between students, teachers, and other adult employees should be respectful of the individual student, of a nature that does not make a student feel uncomfortable and is conducive to creating a stable environment.

Sexual harassment includes making unwelcomed sexual advances, engaging in improper physical contact, making improper sexual comments, or otherwise creating an intimidating, hostile, or offensive educational learning environment. All students and staff must behave with respect for the dignity of others.

If a student has concerns about the nature of any conduct or physical contact by

an adult employed by this school, by a fellow student, or by a member of the public, the student should immediately report this concern to a school employee (such as a teacher, administrator, counselor, etc.). The student should also discuss this concern with parents or guardians.

Students are encouraged to report any conduct or contact that makes them uncomfortable, bothered, or contrary to a stable learning environment.

All such reports will be investigated immediately by school authorities. Criminal charges will be handled by civil authorities. Anyone found to have violated this policy will be subject to disciplinary action up to and including expulsion from school if they are a student, termination from employment if they are an employee, or criminal charges if they are filed.

All such reports will be handled discreetly to maintain confidentiality, avoid embarrassment, and protect those who report. However, this school is required by law to report child abuse to the appropriate social agency, which protects the rights of individuals in such cases.

Appendix J

ATHLETICS/ACTIVITIES ACADEMIC, ATTENDANCE, ELIGIBILITY CODE

THIS IS A 365 DAY POLICY—24 HOURS A DAY—ACCUMULATIVE OVER 4 YEARS

I. STATEMENT OF PHILOSOPHY

Lynden Christian students who participate in athletics/activities represent the school in a distinctive way. Participating in such activities is a privilege, one that is contingent not only upon meeting board and state approved academic standards, but also upon demonstrating lawful, respectful, and appropriate conduct at all times. Students are to conduct themselves in such a manner that they bring honor and respect upon God, their families, their school and themselves both on and off the field of play. Because participation is considered a privilege, the student accepts the training rules, regulations, and responsibilities unique to the individual activity in which they participate.

“No discipline seems pleasant at the time, but painful. Later on, however, it produces a harvest of righteousness and peace for those who have been trained by it.” Hebrews 12:11

A central part of our Lynden Christian School mission is to help students grow and mature into perceptive and caring Christians. Hebrews 12 makes it clear that God disciplines His children in love and because of love. In the same spirit, Lynden Christian High School seeks to administer discipline rooted in Christian love, restoration, and the development of Christlike character. While our intent mirrors God’s perfect discipline, we acknowledge our human imperfection and therefore strive to apply discipline with humility, consistency, and grace for the good of each student and the wider school community.

II. SCOPE OF CODE

The rules and regulations contained in this athletic/activities code apply not only to student-athletes but also to cheerleaders, ASB participants, club members, music and drama students, and other students in supporting roles such as managers, statisticians, and similar positions. These expectations are in effect from the time of receipt through the termination of a student’s eligibility at Lynden Christian High School, including summer months and the time between seasons.

III. GENERAL RULES

A. WIAA rules must be followed in all cases of eligibility, transfer, physical examinations, insurance coverage, starting dates, use of school equipment, etc.

B. No student athlete may quit one sport and turn out for another after the season has begun without the mutual consent of the coaches.

C. Participants must travel to and from contests away from Lynden Christian High School in transportation provided by the school. The only exceptions permitted are:

1. Injury to a participant which would require alternate transportation
2. After a contest, a participant may leave with their parent/guardian or another approved driver listed in Final Forms only after the parent/guardian or approved driver has personally signed the student out with the coach.
3. Approval by the Administration for permission to ride with others. This request must be in writing by the parent/guardian in advance and directed to the Athletic/Activities Director or designee
4. Approval by Athletic/Activities Director for permission to ride with others may be granted under extenuating circumstances. i.e. The school is unable to provide transportation.

D. Any display of unsportsmanlike conduct toward a teammate, opponent or official during a practice or contest will result in counseling by the coach and possible discipline or suspension.

E. Participants will not engage in delinquent behavior, unlawful acts, insubordination, inappropriate use of social media, technology, or acts of bullying/hazing/harassment/intimidation. Any offenses considered illegal in the eyes of the law (excluding minor traffic offenses) may also be in violation of the code.

F. Use of Illegal Substances

Washington Laws and Student Eligibility. School and WIAA rules and regulations are intended to discourage the use of alcohol, tobacco, legend drugs, controlled substances and paraphernalia and to encourage the use of school and community resources. A

violation shall be considered a violation of the Athletic/Activities Code and shall subject the student to disciplinary actions, which may include suspension for the remainder of the season or the remainder of his/her high school career.

1. Participants agree not to use tobacco (in any form), alcohol or any un-prescribed drugs. If a student is at a location, where minors are using drugs or alcohol, the participant must immediately remove themselves. The student bears the responsibility to demonstrate they actively pursued all reasonable means to exit. Otherwise, the student is presumed to have participated in the activity in fact as well as in spirit.

2. Participants will not possess, use, provide or be under the influence of alcoholic beverages, narcotics, legend drugs including anabolic steroids, other drugs, controlled substances, inhalants, or other intoxicants (including, but not limited to glue, petroleum liquid or gas) unless prescribed by a medical practitioner. In addition, participants will not possess, provide, sell or purchase drug paraphernalia, including that which may be used for inhaling, "huffing," or vaping.

3. Participants will not possess or use tobacco/nicotine or vaping in any form.

G. A participant shall not engage in conduct detrimental to the team or to the school.

H. A participant shall not steal or use another person's property without permission.

I. A participant is expected to attend all scheduled practices, meetings, contests or events. If a student finds it necessary to miss any of the above, prior arrangements must be made with the coach.

J. Issued equipment belongs to Lynden Christian High School. The loss or misuse of this equipment will be the financial obligation of the participant. Until this obligation is fulfilled, the student-athlete will not be allowed to participate in further competition, take exams, or to receive awards.

K. Completion of the athletic season is required for the student to be eligible for a letter or other team or individual award. (Exception: injury which limits participation.) No awards shall be given to any student suspended for the season for an Athletic Code violation. Students who do not complete an athletic season without permission from their current season coach may face a suspension from their participation in a subsequent sport season. (This may be considered as "conduct detrimental to the team or school" (see G))

IV. PROCEDURES FOR RULE INFRACTION

All penalties for code violations are at the discretion of the Administration subject to the following suggested guidelines:

1. A student will be found in violation of Lynden Christian Athletic/Activities Code if any of the following occur:

A. The violation is observed by a staff member or law enforcement official

B. The student or parent/guardian self-reports or admits the violation

C. The violation is supported by a preponderance of the evidence.

2. First offense during high school - The participant will be suspended 20% of the total allowable contests in the season.

A. Self-Report of First Violation – Up to ten percent (10%) of the total allowable contests may be waived for a first-time violation if the student or parent/guardian voluntarily reports the violation to a coach or administrator before any investigation begins. The violation will still be recorded as a first offense.

3. Second offense during high school - The participant will be suspended 50% of the total allowable contests in the season.

4. Third offense & subsequent offense/offenses or severe offenses during high school - The participant will be suspended for a minimum of 70% of the total allowable contests in the season, up to one complete season.

5. Appeal process - *Athletic Discipline Committee (ADC)*

If a student believes the discipline, as determined by the code, has been misapplied, they may appeal to the ADC. The appeal must be a written grievance to the administration, within two (2) school business days of determination and notification of code violation. The administration will convene the ADC, and the student and their parents/guardians will have the opportunity to present their case to the ADC for consideration. The administrator who determined the violation will also be present to provide/verify information.

a. ADC is comprised of at least: 2 non-Coaching teachers, 2 Coaches (not involved in the situation), and an Administrator.

b. Athlete is unable to participate in contests during the appeal process. Contests

missed during this time will be credited towards serving a suspension.

6. Legend drugs and controlled substances –

Penalties for the possession, use or sale of legend drugs (drugs obtained through prescription, RCW 69.41.020-050) and controlled substances (RCW 69.50) shall be as follows: (WIAA Handbook 18.26.2)

1st Violation - A participant shall be immediately ineligible for interscholastic competition in the current interscholastic sports program for the remainder of the season. Ineligibility shall continue until the next sports season in which the participant wishes to participate unless the student accesses the assistance program outlined in B (below.) An athlete who is found to be in violation of the Legend drugs and controlled substances rule shall have two options.

a. The athlete will be ineligible for participation in contests for the remainder of that interscholastic sports season and must meet the school's requirements in order to be eligible to compete in the next interscholastic sports season. The school principal will have the final authority regarding the student's participation in further interscholastic sports programs.

b. The athlete may choose to seek and receive help for a problem with use of legend drugs or controlled substances. Successful utilization of school and community assistance programs may allow him/her to have eligibility re-instated in that athletic season, pending recommendation by the school.

2nd Violation - A participant who again violates any provision of RCW 69.41.020 through 69.41.050 or of RCW 69.50 shall be ineligible for interscholastic competition for a period of one (1) calendar year from the date of the second violation.

3rd Violation - A participant who violates for a third time RCW 69.41.020 - 69.41.050 or of RCW 69.50 shall be permanently ineligible for interscholastic competition.

7. Additional Notes

a. Severe offenses may supersede recommended guidelines for 1st or subsequent offenses.

b. Offenses are cumulative through a student's high school career.

- c. For offenses involving legend drugs (drugs obtained through prescription, RCW 69.41.020-050) and controlled substances (RCW 69.50) *see #6*.
- d. A student must complete the full season during which the suspension is served for the suspension to be deemed satisfied. Failure to complete that season will result in the entire suspension being carried over to the next athletic season in which the athlete participates.
- e. Students who are ineligible for competition or performances are expected to continue practicing with the team, pending approval from the coach or sponsor. During the period of ineligibility, athletes are required to remain with the team during contests and sit on the bench out of uniform. Ineligible students are not permitted to be dismissed early from school to travel with the team.
- f. Suspended athletes who desire to participate in athletics at another school—when the sport is not offered at Lynden Christian—must submit an appeal to the Athletic Discipline Committee prior to the start of that season. (IV.4) Approval is contingent upon both committee approval and the other school’s agreement to offer the athlete a roster spot.
- g. If a student wishes to serve a suspension while participating in a new sport, they must submit an appeal to the Athletic Discipline Committee prior to the start of that season. (IV.4) Approval is contingent upon both committee approval and the receiving coach’s agreement to offer the athlete a roster spot.
- h. Suspensions may be continued into the next sport season if not fulfilled.

V. ATTENDANCE

- a. Daily: To participate in after-school activities (i.e. a practice, contest, performance, etc.) that day, a student must have attended school the entire day. Acceptable exceptions are:
1. pre-arranged excused absence on file in the office (i.e. medical/legal appointment, funeral, school sponsored events.)
 2. Signed statement from a doctor verifying an appointment. *Must return immediately from appointment.*

3. Approval from Activities Director or Building Administration.

b. Any suspension from school (whether in-school or out-of-school) will result in a 10% suspension of the total allowable contests for that sport.

c. If a student is suspended from school (whether in-school or out-of-school), they are not permitted to attend practice, participate in team activities, or be present at any event as a spectator during the suspension period. If an athlete chooses to attend an away contest as a spectator during this time, they will be prohibited from attending the next home contest, regardless of eligibility.

VI. ACADEMICS ATHLETICS/ACTIVITIES

Participation in athletics/activities requires successful performance in academics. The academic standards place proper emphasis on student achievement in the classroom to maintain eligibility. (*WIAA Handbook – 18.0.0*)

1. Preceding Semester

The WIAA requires that each student shall have passed the minimum number of classes in the immediately preceding semester in order to be eligible for competition during the succeeding semester beyond normal grading periods. The record at the end of the semester shall be final, except for those class-for-class replacement credits earned in a regular, accredited summer school program (*WIAA Handbook – 18.8.4 & 18.8.5*).

2. End of Semester

a. FALL – If a student has failed to meet the grade requirements of WIAA Handbook - 18.8.4 in the second semester of the previous school year:

1. LCHS requires that if a student-athlete fails one (1) class at the end of the semester they are ineligible for 10% of contests allowed for the regular season for that sport. Suspension from contests begins at the start of the next semester.

2. WIAA requirements regarding probation and academic suspension will also be followed according to 18.8.6

b. WINTER/SPRING - If a student who failed to meet the grade requirements of WIAA 18.8.4 shall be placed on suspension because the grading period ended during the

same school year (i.e., second semester for a winter or spring athlete):

1. LCHS requires that if a student-athlete fails one (1) class at the end of the semester they are ineligible for 10% of contests allowed for the regular season for that sport. Suspension from contests begins at the start of the next semester.

2. WIAA requirements regarding is a student fails more than one (1) class at the end of the semester the student is suspended the first five (5) weeks of the succeeding semester (*WIAA – 18.8.6.2*)

3. During Quarter/Semester

Lynden Christian High School requires each participant to maintain passing grades in all assigned classes to remain eligible during the current quarter/semester.

a. Each participant is eligible providing they are passing all classes.

b. Academic eligibility is checked every 1-3 weeks. In order to be eligible to participate, a student must be registered, attending, and passing all classes. Eligibility for the student will be determined as follows:

1. Student-athlete receives a failing grade in any class at the end of a 1-3 week period they will be put on academic probation in that class.

2. If the student-athlete is still failing the class after the probation period, they will be ineligible to participate in contests/performances until the Athletic/Activities Director receives a signed note, email, or verbal confirmation from the teacher that the student is passing their class.

3. Once a student is put on probation in a class, they remain on probation for that class for the remainder of the semester.

c. Each participant receiving a failing grade in any class at the end of the nine-week grading period while "in-season", will be suspended from 10% of their contests and put on academic probation for the remainder of the semester for that class.

1. If a student receives a failing grade at the end of the 1st quarter and first activity involvement is winter, he/she would be on probation from the start of the winter season

Updated 5/20/2026