



LYNDEN CHRISTIAN
HIGH SCHOOL

Family and Student Handbook
2022-2023

Shaping Minds. Cultivating Hearts. Promoting Service.

Table of Contents

Greetings	6
About LCHS	
Mission.....	7
Values	7
Accreditation.....	7
Non-Discrimination Policy	7
History.....	7-8
LCS Organization & Chart	8
Appendix A	
LCHS Faculty & Staff	8
Appendix B	
Student Life & Academics	
School Traditions	9
Honor Code.....	9
Extracurricular Activities.....	10
School Publications.....	11
HS Daily Bulletin	
Final Forms	
Lyncs Lines	
Excelsior	
Academic Handbook & Course Catalogue	
2022-2023 School Calendar	11
Appendix C	
Class Schedule.....	11
Appendix D	
Student Services	11-12
Counseling, College, and Career Center	
Student Academic Services (SAS)	
Office	
Telephone	
Associated Student Body Card.....	12
FACTS RenWeb.....	12
Schoolology	12
HS Laptop Requirement.....	13
School Sponsored Functions	13
Lost and Found.....	13
Fees and Fines	13
Chapel.....	14
Lunch.....	14
Sponsored Lunches.....	14
Snacks.....	14
Technology in School.....	14-15
Cell Phones	

Electronic Devices, Cell Phones, Wearables, Personal Laptops/Tablets	
Social Media	
Cyber Bullying	
Acceptable Use Policy.....	Appendix E
Part-time Students	15
Building & Equipment Use	
LCHS Building Map	16
Appendix F	
Use of Facilities.....	16
Bookstore.....	16
Library	16
Computer Lab.....	16
Worship & Fine Arts Center (WFAC)	16
Lockers	17
Bathrooms	17
Safety and Security	
Student Campus Access Permissions.....	18
Students On Campus.....	18
Visitors.....	18
Medications.....	18
Defibrillator.....	18
Fire, Earthquake, Lockdown Drills and Warning Signals	19
Weapons.....	19
Student Transportation	
Bus Transportation.....	20
Student Vehicles	20
Attendance	
General Principles.....	21
Office Notification	21
Excused Absences.....	21
Unexcused Absences	21
Excessive Absence Policy.....	22
Extended Absences	22
Leaving Campus	22
Tardy Policy.....	23
Student Conduct and Discipline	
Goals	24
Categories of Conduct.....	24-26
Category A	
Category B	
Category C	
Dress Code and Appearance	26
Disciplinary Contract	26-27
Detention.....	27
Suspension	27
Expulsion	27

Searches	28
Critical Issues/Conflict Resolution	
Theological and Educational Foundation	29
Biblical Conflict Resolution	29
Responsibility	30-31
Student Responsibility	
Teachers and Grade Level/Subject Department Responsibility	
Administration Responsibility	
Parent Responsibility	
School Board Responsibility	
Church Responsibility	
Bullying & Harassment	
Bullying, Harassment, & Intimidation	32-33
Sexual Harassment.....	33
LCS’ Position Statement on Human Sexuality & Gender Identity.....	33
Appendix G	
Appendices	
Appendix A.....	34
Appendix B	35-36
Appendix C	37
Appendix D	38
Appendix E	39-42
Appendix F.....	43
Appendix G.....	44-45

Greetings

Lynden Christian High strives to provide an excellent and broad Christian educational program, so students grow and mature into perceptive and caring Christians with life-encompassing obedience to God, equipped with the Armor of God.

This handbook will help students and parents navigate LCHS's daily life, educational programs, and policies. We hope these policies create a positive student learning experience and foster partnership with parents. For questions and clarification, please contact the school office.

Thank you for choosing LCHS. To God Be the Glory!

The administration is the final authority to interpret and apply these policies to circumstances throughout the year. The administration may also adopt a new policy or change current policies as needed.

About LCHS

Mission

The mission of Lynden Christian School is to be an effective instrument of God. Together with Christian parents and the church, we seek to educate children and young people so that they may grow and mature into perceptive and caring Christians. Finally, our goal is to produce citizens who will have a transforming influence in the world.

Values

Lynden Christian Schools believe that school is an extension of the Christian home, designed to reinforce the faith and values of the parents. We believe that policies and procedures governing the school should be consistent with the standards of the Bible, which is God's inspired Word. We believe that this is God's world, that each child is unique in God's sight, created in His image to live a life of faith and service.

Accreditation

Accreditation through Christian Schools International (CSI)
Approved by the WA state Board of Education

LCS Non-Discrimination Policy

Lynden Christian School admits students of any race, color, national and ethnic origin to all the rights, privileges, programs, and activities accorded or made available to student at the school. It does not discriminate based on race, color, national and ethnic origin in administration of its educational policies, admissions policies, scholarships and loan programs and athletic and other school-administered programs.

History

Lynden Christian's earliest history can be traced to a group of families who settled in the pioneer town of Lynden in the late 1800s. They wanted an education founded on the Word of God, which would allow them to exercise their parental baptismal vows.

During the spring of 1910, a group was identified to organize the new school. The Society for Christian Instruction was formed, Articles of Incorporation were written, a School Board selected, and the search for a school building began. Property on Grover Street was purchased in June and construction began that summer. This building was completed and in service by February of 1911. Doors opened the fall of 1911 in rented quarters with an enrollment of 72 students, which exceeded everyone's expectations!

By 1930, the school offered junior high education. Lynden Christian expanded to include secondary education in a newly built facility dedicated in 1947. Only two years later, visionary supporters began the first phase of a new elementary school complex near the high school on Drayton Street. By 1965, the current high school building was dedicated and the First Street building became the middle school, creating a unified campus.

Always pressing on, supporters have moved forward in faith with more campus expansions and improvements:

- 1977: Industrial Arts and Agriculture Building
- 1994: Multi-million-dollar Middle School
- 1999: Central Business Office
- 2002: Worship and Fine Arts Center
- 2006: Renovation of the SE wing of the high school
- 2008: Renovation of the SW wing of the high school
- 2011: Strength and Fitness Center

Lynden Christian School has faithfully provided Christ-centered education for over a century. The years may pass but the dedication, sacrifice and vision of the parents remain the same. Our parents today continue to fervently desire a faith-based education for their children.

LCS Organization & Chart

Lynden Christian Schools is a private, parent-run system governed by a Board of Directors who are elected by the school “Society,” comprised of parents and others who support the school. We are a member of larger organizations such as CSI – Christian Schools International, NWCSI – Northwest Christian Schools International, and Washington Federation of Independent Schools (WFIS).

While we are a Christian school, we are not a school-sponsored and controlled by one church as in a parochial school. Lynden Christian School has a remarkably diverse church support base of nearly 60 churches. The parents control the school through an elected board of twelve members called the “School Board.”

The School Board makes decisions regarding finances, hiring of personnel, providing and maintaining facilities, and determining the educational and operational policies and regulations. To implement these policies, the board appoints administrators. The head administrator is the superintendent. High school and K-8 principals are responsible for their respective buildings and staff and are directly accountable to the superintendent.

Please see the Organization chart in [Appendix A](#).

LCCHS Faculty & Staff

The faculty at LCCHS is a dedicated group of caring and qualified professionals. All instructors are graduates of accredited colleges or universities and many also have advanced degrees. Each one is employed based on their own personal profession of their faith, commitment to educational excellence in their teaching, and a willingness to give of themselves for the development of their students.

Please view a list of the high school faculty and staff in [Appendix B](#).

Student Life & Academics

School Traditions

Colors

Our school colors are blue and white.

Mascot

Our school mascot is the lynx.

School Spirit Rock

Our school leadership decorates this rock to build school spirit. The rock is located in front of the high school building in the center of the parking lot.

Alma Mater

Lynden Christian Forward

Lynden Christian, forward

Is our marching cry.

For Jesus is our captain; His power we testify.

To love is what He bids us; to serve must be our goal.

Then shout the title boldly – Lynden Christian High!

Lynden Christian upward

Is our Leader's cry

And as we love our Savior, we work to sanctify

Our bodies in His service; our spirits in His praise.

Then bear the emblem proudly – Lynden Christian High!

Audio/Video Link:

<https://youtu.be/Sf0FRKy3wVA>

Honor Code

Jesus was asked in Matthew 22:36-40 which commandment is the greatest and He answered “You shall love the Lord your God with all your heart and with all your soul and with all your mind. This is the first and greatest commandment. And the second is like it: love your neighbor as yourself. On these two commandments depend all the Law and the Prophets.”

To love and honor God and others requires Christians to live a life of integrity and honor, which includes refraining from stealing and lying. Therefore, students at Lynden Christian should avoid plagiarism, which is defined as the practice of taking or using someone else's work or ideas and passing them off as one's own. Students are expected to understand and follow this expectation and seek clarification from a teacher or administrator before submitting an assignment or assessment.

Extracurricular Activities

Lynden Christian students are encouraged to participate in extracurricular activities. LCHS offers a wide variety of options for students wishing to participate in athletics, art, drama, music, and clubs. For detailed information on offerings, visit the school website or contact the Activities Director.

Eligibility

A student must have passing grades in 6 of 7 classes for freshman, sophomore, and juniors and passing grades in 5 classes for seniors on track to graduate. Return to play is dependent on a passing grade in the course or courses previously marked as failing.

Attendance Requirements

To participate in a practice or contest/performance that day, a student must have attended school the entire day. Acceptable exceptions are:

- Pre-arranged excused absence on file in the office (i.e. medical/legal appointment, funeral, school sponsored events).
- Signed statement from a doctor verifying an appointment.
- Approval from the Activities Director or Building Administration.

Behavior Requirements

Students participating in extra-curricular activities must meet the guidelines of the Activities Behavior Code. This agreement, signed by the student and parent/guardian, must be completed before participation is allowed.

Medical Requirements

A valid physical form is filed with the Activities Director's office. Physicals are valid for 24 months but must be valid throughout the school year.

- Insurance Waiver form filed or proof of purchase of school offered insurance.

Interscholastic Team Levels: Varsity (V), Jr. Varsity (JV) and C Team (C)

	Fall	Winter	Spring
Boys	Football (V, JV, & C) Cross Country	Basketball (V, JV, & C)	Golf (V & JV) Baseball (V & JV) Soccer (V & JV) Track
Girls	Volleyball (V, JV, & C) Cheerleading (V) Soccer (V & JV) Cross Country	Basketball (V, JV, & C) Cheerleading (V)	Fast Pitch (V, JV, & C) Track

Public School Athletic Participation

Students may be allowed to participate in sports not offered at Lynden Christian that are offered at the public school in the student's school district of residence. For information on this program please inquire with the Activities Director's office.

School Publications

HS Daily Bulletin

The high school produces a daily bulletin which is available on the school app. It features high school announcements, activities, and opportunities.

Final Forms

All students are required to fill out/sign forms in Final Forms regardless of participation in athletics/activities. Final Forms is also used for students to sign up and track eligibility for athletics/activities.

Lyncs Lines

Each week the school produces Lyncs Lines to provide updates on PK-12 school activities and opportunities. It is also available online at the school website.

Excelsior

The high school yearbook is created each year by students enrolled in the high school yearbook class and is available for purchase to students and families.

Lynden Christian School App

Download and create a profile in this app to keep up with the latest school updates about general information, the school calendar, Schoology, report cards, athletics and activities, the newsletter, and so much more!

Academic Course Catalogue

The Course Catalogue can be viewed on the website.

2022-2023 School Calendar

The school calendar allows students and parents to know when school is in session, breaks, and teacher workdays. Please go to [Appendix C](#) or to the school website to view the calendar.

Class Schedule

This schedule applies when school is in session for five full days. During shorter weeks and special days, the high school schedule will be altered to ensure an equitable distribution of instructional time among the seven periods. Schedule changes are available on the *HS Daily Bulletin*. Please go to [Appendix D](#) to view the Class Schedule.

Student Services

Counseling, College, and Career

All counseling services are located in the counseling center. The services are confidential, free, and available on a walk-in basis throughout the day. All types of counseling are provided such as personal, educational, vocational, testing, scholarships, and financial aid.

The College/Career Center has excellent resources to help students throughout

their high school academic career as well as their next steps after high school. While open to all students, juniors and seniors especially should make a point of using the available career resources.

Student Academic Services (SAS)

Course, Academic Modifications, Educational Testing

Lynden Christian School provides accommodations or modifications in accordance with the Americans with Disabilities Act. To qualify for accommodations, students must have educational testing completed through the Student Academic Services or provide LCS with a psychoeducational evaluation completed within three academic years prior to entering high school. All documentation provided to Lynden Christian School will be kept confidential and will be used solely to determine accommodations/ modifications or other support services.

Student Support Plans

Students who have assessed learning needs are provided with a Student Support Plan through Student Academic Services. The Student Support Plan will indicate any approved classroom accommodations or modifications necessary for student success, document the student's learning weakness and date of diagnosis. The student's current teachers will be provided with a copy of the Student Support Plan. It is the student's responsibility to request use of approved accommodations.

Office

The office personnel will help you by providing information and distributing some supplies and forms. The office is a place of business and therefore students are not to loiter or otherwise restrict its service and efficiency. Only those students with permission are to be in the office area.

Telephone

Students may use the office phone with permission.

Associated Student Body (ASB) Card/Student I.D.

This card is used for student identification and permits free access to most regular season home athletic contests and reduced cost to many athletic events at other schools.

FACTS RenWeb

FACTS RenWeb is the online software program LC uses for official report card distribution. Teachers are also able to communicate with parents and students through FACTS RenWeb. Information about login procedures is given during orientation and registration.

Schoology

LCHS is not an online school; however, educators may utilize this online academic learning management system (LMS) as a tool to deliver and collect assignments, tests, grades, messages, or any other resource available in this software. Each educator will determine how they will use Schoology and students are expected to comply with each teacher's rules and regulations for this platform. Each student will receive login information.

HS Student Laptop Requirement

The high school requires each student to bring a laptop to school daily for instructional use. Parents may either provide a laptop or lease a computer from the school.

The minimum specifications of the laptop are:

- Windows 10 Home
- I3 (processor)
- 4GM RAM
- 128 GB SSD
- Wireless AC
- Webcam

School Laptop Rental Information:

The rentals are Lenovo 300e (2nd and 3rd generation) laptops.

Specifications:

- 11.6" touch screen
- 64GB eMMc hard drive
- 4GB RAM, N4100 (processor)
- Windows 10 Pro
- A laptop protective case is included (which should protect it from most drops)
- Malwarebytes is included as extra malware/virus protection.

Accessories

- Earbuds or headphones: Since some online work may include individual listening, students will also need to bring headphones or earbuds to school for use under the supervision of a teacher.

Students are expected to use laptops for educational purposes according to acceptable use and lease policies. Questions about laptop specifications, requirements, and leasing information should be directed to the Technology Director.

School Sponsored Functions

All classes, organizations, or other school-sponsored functions and events must be approved by the administration, supervised by approved members of the teaching staff (or volunteers), and follow school policies.

Lost and Found

Misplaced items should be brought to the office. Students are expected to accurately identify it prior to claiming it.

Fees and Fines

In addition to tuition, the school receives payments of fees and fines. Examples of fees include ASB cards, class dues, athletic participation, and curricular fees. Fines may be collected for situations such as library book returns, property damage, parking violations, lost/damaged school owned uniforms/equipment, etc. Delay in payment of fees or fines could result in restriction of participation in a program.

Chapel

Chapel is an important part of LCHS and is required for all enrolled students. It is a time when students and staff gather to worship God and receive a spiritual refreshment, perspective, and challenge. Chapel is typically held in the Worship and Fine Arts Center (WFAC) on Tuesday mornings.

Lunch

Students and parents are expected to provide lunch and snacks. The school does not have a cafeteria. Vending machines are available. If students forget lunch, they may call home between class periods to request someone bring their lunch. They will not be excused from school to get it.

Sponsored Lunches

As approved by the administration, different student groups offer lunches for sale as a fundraiser. Students may purchase these lunches according to office instructions.

Snacks

Snacks may be eaten at break times in the hallways. Students should clean up after themselves and report any spills to the office.

Technology in School

Technology is an integral part of student life. While LC recognizes the benefit of having devices, we also identify that overuse can cause harm to the learning and education process. Students are expected to learn when and how to use technology by following LC's policies:

- Use of Cell Phones:
 - Cell phones are to be stowed in the cell phone garage (or designated classroom area) at the beginning of class unless directed otherwise by the teacher.
 - Teachers will collect cell phones or devices if students do not cooperate with class and school policies. The student may retrieve the phone from the assistant principal at the end of the day in addition to other consequences.

- Use of Audio/Video/Photography Devices:
 - Devices with a camera or recording capabilities may not be used in bathrooms or locker rooms at any time.
 - Wearable Smart devices (i.e., Apple Watch) may not be used during classes, except when the teacher permits.
 - Audio/video recording or photographing of an individual without consent is prohibited. Audio or video recording of classroom activities is permitted only with the permission and supervision of the classroom teacher for education-related activities. Audio/video recording or photography in bathrooms or locker rooms is always prohibited. Publication of pictures, videos, or audio recordings without the consent of the participant is prohibited and may be referred to the appropriate law enforcement agency.
- Use of Social Media:
 - Inappropriate messages, postings, and images may be reviewed by school officials. Students are also responsible to understand there is no expectation of privacy when posting thoughts and images on social media sites.
- Cyber Bullying:
 - No form of cyberbullying is allowed or will be tolerated. For more details and definitions of Cyber Bullying, go to the "Acceptable Use Policy" section in this handbook.

Part-Time Students

Part-time students are those students who take less than six (6) classes during a semester for freshman, sophomore, and junior years and less than five (5) courses during the senior year.

Students enrolled in four or more courses may participate in drama productions and class activities such as retreats, service days, trips, and JSB.

Part-time seniors may not participate in graduation and will not have a photo in the yearbook or the graduation class wall picture.

Building & Equipment Use

Students are expected to show maturity, responsibility, and stewardship when caring for our building, grounds, desks, lockers, and other equipment. We expect all students to support the maintenance department in sustaining excellent standards of cleanliness.

LCHS Building Map

Please go to [Appendix F](#) to view the LCHS Building Map.

Use of Facilities

If a student would like to use school equipment or space, check with the teacher responsible for that area and get permission from the office before use. Students are not allowed in the facility without adult supervision.

Bookstore

Students are required to lease their own textbooks and class materials. The bookstore will be open at specified times to help you lease books.

Library

The library partners with students and teachers to help them find and use both digital and physical materials for their projects and assignments and to encourage reading for enjoyment. Resources include: computers, books, DVDs, print and digital magazines, databases, and nonfiction e-books with 24/7 access, citation guides, special collections for Family Psychology, World Issues, and AP Language, photocopier, scanner and more. The library can be used as a place to work on projects, study either individually or as a small group, or reserved for a whole class.

Computer Labs

The computer lab is available for students who need to catch up on papers or do a variety of research projects. Each student is responsible for knowing and abiding by the [Acceptable Use Policy](#). You may view this policy in [Appendix E](#) of this handbook.

Worship and Fine Arts Center (WFAC)

Anyone who would like to use the Worship and Fine Arts Center must contact and get approval from our Worship and Fine Arts Calendar Coordinator.

Lockers

All lockers are the property of LC even if temporarily assigned to students. The school office will assign each student a locker for books and personal belongings. Students are to keep their assigned locker unless permission is obtained through the office for an alternative locker assignment. Stickers or tape that are difficult to remove or writing on the lockers is not permitted. Students may not display decoration or pictures that contradict the values or spirit of the school.

Physical education teachers and coaches will assign lockers and combinations for students in physical education classes and/or on athletic teams.

All lockers and personal possessions may be inspected or searched at any time for cleanliness, missing property, vandalism, and presence of illicit materials.

Bathrooms

Designated men's and women's bathrooms for students are located across from the office and at the end of each hallway. Students may not use staff bathrooms.

Safety and Security

Student Campus Access Permissions

Students need permission to be in any part of campus when not under the supervision of a classroom teacher. This includes, but is not limited to the parking lot, WFAC, side study rooms, locker rooms, gymnasium, fitness center, shop, closets, storage rooms, and music practice rooms.

Students on Campus

Students should not be at school before 8:00 am after 4:00 pm on school days (or at any time on days when school is not in session) unless they are directly supervised by a staff member acting in accordance with official school duties. Coaches or teachers in charge of activities before or after school will open and lock the appropriate door. Students who are present on school property without proper supervision or permission will be considered trespassers. Do not knock on the windows to find someone to help enter the building.

Loitering in the parking lot is prohibited. Students must leave campus 15 minutes after home games or following the return of buses from away games. In addition to security and safety considerations, our no loitering policy is aimed at maintaining a healthy community with our neighbors who live in proximity to our school.

Visitors

If a student wishes to bring a visitor to class, permission must be given by the administration in advance. If a parent or guardian wishes to visit a class or classes, the office and teacher(s) should be notified of the visit. All visitors must check in at the office and are required to wear a visitor lanyard and comply with school rules.

Medications

Students who require medication during school hours (including over-the-counter medicines), school policy and state law require that the necessary forms for administering medication be on file in the school office. Forms must be completed each year by the parent and physician. Students may not have medicines in their possession while at school, and school personnel may not dispense medication without the appropriate permission the completed forms provide. The school does not allow the presence or use of medical marijuana on campus. Forms and copies of the policy are available in Final Forms.

Defibrillator

Defibrillators are located in the student lounge, the gymnasium outside the training room and 2 in the strength and fitness center (upper stairwell and lower cabinet).

Fire, Earthquake, Shelter-in-Place, Lockdown Drills and Warning Signals

LC will regularly practice fire, earthquake, shelter-in-place, or intruder/lockdown drills. An all-campus evacuation will be conducted at least once per year. Students must always take their designated round from the building in an orderly manner. Below are the signals for each type of event:

- A fire or evacuation will be indicated by an audible alarm.
- Intercom announcements sent across the campus public address (PA) system indicate an earthquake, a shelter-in-place, or an intruder/lockdown drill procedure or event.

Weapons

The possession and use of any weapon will be a Category C offense and consequences will be carried out as spelled out in the “Student Conduct and Discipline” section of this handbook.

Student Transportation

Bus Transportation

Bus transportation is available to all students. Parents/guardians are encouraged to use this service as much as possible and should contact the Transportation office for arrangement. Students are required to cooperate with the bus rules and expectations.

Student Vehicles

Students who utilize personal vehicles to come to school are expected to cooperate with the following policies:

Non-Motorized (bikes, skateboards, etc.)

- Students must use the designated storage and rack areas in the courtyard
- Items, such as skateboards and scooters, must be secured in a locker for the duration of the school day

Motorized

- Students must park only in designated areas
- Students must register each vehicle with the office before parking on campus
- Students must always display a parking tag in their cars while parked on campus.
- Student must drive safely. They should travel no faster than 10 mph and refrain from reckless driving such as spinning tires or fishtailing.
- Students should always drive in a manner that protects the safety of pedestrians and other vehicles.
- Parking violations will result in a fine, suspension of parking privileges, or other disciplinary actions based on administrative discretion.

Attendance

Lynden Christian is committed to classroom-based instruction from a Christian world view. Each day provides new learning experiences and opportunities to grow academically, spiritually, and socially. Therefore, LC requires student attendance and participation in classes, activities, and gatherings throughout the school day. The following attendance policies encourage faithful attendance and promote student learning.

General Principles

- Students are expected to be in school every day unless there is an emergency such as illness, or a death in the family.
- Once at school, students are required to be on time for each class (including chapel and other activities) and prepared to learn.
- In case of absence, the school office should be notified in a timely manner (details below).
- Students are responsible for finding out missed instruction and arranging with each teacher for the submission or completion of assignments, assessments, or projects.

Office Notification

If a student is absent, a parent or guardian must notify the office before 8:30 am with the reason for the absence and physician documentation as needed through email at hsattendance@lynchs.org or by phone at 360-318-9525 (option 3). Text messages on a student's cell phone are not acceptable documentation to the office. The office will classify and record each absence.

Student absence will classify as unexcused if the office does not receive timely and appropriate information or documentation.

Excused Absence

Absences are excused in circumstances such as illness, medical appointments, etc. For other reasons, parents may request an excused absence with the understanding it affects student learning. These absences will be applied under the Excessive Absence Policy.

Unexcused Absence

Absence without administrative approval is considered unexcused. Unexcused absences will result in disciplinary action at the discretion of the administration. Missed assessments or assignments may only be completed at the discretion of the teacher and administration. Unexcused absences will apply to the Excessive Absence Policy.

Excessive Absence Policy

Students must meet attendance standards to receive semester credit for each class. Therefore, the following will apply in the case of excessive student class absences (excluding school activities):

- Upon the sixth (6) absence in a semester, students and parents will be notified.
- Upon the ninth (9) absence, the student risks significant grade reduction or loss of credit based on administrative review.

Extended Absence

Due to Illness

In the case of severe or prolonged illness, exceptions to the excessive absence policy will be considered at the discretion of the school administration. A doctor's note is required within one week of any extended absences. Students absent due to illness are expected to complete missed assignments and assessments within the number of days equal to the number of days absent.

Due to Other Reasons

Students who plan to be absent from school for more than two days must pick up, complete, and return a Planned Absence Form to the office five days prior to the planned absence. The administration will review the form and advise the student and parents of implications of the plans, considering input from teachers and the academic status of the student. In these circumstances, students should not expect teachers to provide assignments ahead of time or instruction online. Students are expected to make prior arrangements with each teacher and comply with their policies regarding missed instruction, assignments, and assessments. The Excessive Absence Policy applies to planned extended absences.

Leaving Campus

Students who leave campus without permission will be considered unexcused for all class time missed. For circumstances requiring a student to leave campus during the school day, students and parents should follow these protocols:

- Students must sign out at the office to leave campus and must report to the office upon return.
- For an appointment, a parent must contact the school office at the beginning of the school day.
- For an unforeseen event, a parent must call the office before a student will be allowed to leave campus.
- In case of illness, the student must report to the office to contact a parent for permission to leave campus.

Senior Off-campus Lunch Privilege

Seniors who have this privilege must check out and sign in at the office.

Tardy Policy

- Students who arrive late to school must sign in at the office and receive a pass to go to class. The office will record and determine whether a tardy is excused.
- Teachers will establish and apply tardy policies for their courses and will record tardiness accordingly.
- Students who accumulate four schoolwide tardies in a quarter will receive an afternoon detention on the fourth tardy and for each tardy thereafter.
- Tardy records will reset at the beginning of each quarter.

Student Conduct and Discipline

The philosophy of student discipline followed at Lynden Christian School is based on the concepts of the image-bearing nature of the child and the nature of education found in Scripture and expressed in the Lynden Christian School Statement of Philosophy, Discipline is an important part of Discipling. Our goal is to help students become followers of Jesus Christ, not to simply make them obey rules for the sake of the rules. We want to apply the command to seek first the kingdom of God in the way we relate to each other as students, parents, teachers, administrators. We believe the task of the teacher is to encourage movement towards Christian maturity. As part of our mission statement declares, “We seek to educate children and young people so that they may grow and mature into perceptive and caring Christians.”

Goals

- To nurture a relationship with Jesus
- To create a safe and healthy environment
- To promote learning
- To encourage respect for others
- To foster righteous living
- To promote a life of integrity
- To provide opportunities for growth and grace
- To develop citizenship and servant leadership
- To train for life skills

Categories of Conduct

The policies below apply to the school day and all school-related activities. Although Lynden Christian does not routinely monitor students’ off-campus behavior or online activity, the school reserves the right to apply its values and conduct policies to student behavior that occurs online or off-campus not during regular school hours.

Category A - Conduct which undermines an orderly, safe, and healthy school environment include the following examples:

- Tardiness
- Unexcused absence
- Littering
- Dress Code infraction
- Parking infraction
- Entering off-limits areas
- Inappropriate display of affection
- Unauthorized use of electronic devices
- Gambling
- Disruption
- Nuisance items (e.g. water pistols, lasers, lighters)

Students who choose to engage in this conduct should expect to meet with an

administrator and receive consequences such as detention, loss of privilege, or other similar consequences which relate to the offense and are proportional to it.

Category B - Conduct which undermines the integrity of the educational program or shows disrespect for other people. Examples include:

- Honor Code violation
- Vandalism
- Fighting
- Inappropriate communication or behavior
- Disrespect toward others
- Significant disruption
- Insubordination
- Interference with teaching and learning
- Continued Category A conduct
- Violation of the technology *Acceptable Use Policy*
- Endangerment of self or others (e.g. unsafe operation of motorized vehicle)
- Inappropriate use of social media (e.g. taking or posting pictures)

Students who choose to engage in this conduct should expect to meet with an administrator and receive one or more of the following consequences: loss of privilege (may include extracurricular activities), removal from class, office restriction, suspension, disciplinary contract, dismissal from school, or other measures deemed appropriate by the administration.

Category C - Conduct which is contrary to Christian ethical living includes the following examples:

- Continued or significant Category B conduct
- Harmful substances
- illicit drugs, alcoholic beverages, tobacco products, and paraphernalia
- Includes possession, purchase, distribution, use
- improper use of legal substances
- Stealing
- Lying
- Trespassing
- Destruction of property
- Harassment, hazing, *bullying, threats
- Physical assault
- Possession or use of guns, knives, weapons, or facsimiles of weapons
- Sexual activity contrary to biblical standards
- Profane, vulgar, obscene, demeaning, or sexually explicit communication or behavior
- Includes possession, purchase, distribution, use, or solicitation of pornography
- Legal arrest, charge or conviction of a misdemeanor or felony offense occurring on or off campus

*Bullying: any systematic or chronic conduct that physically, emotionally, or mentally harms a student or creates an intimidating or hostile environment.

Students who engage in these behaviors should expect to meet with an administrator. The administration will disciplinary actions which may include the following: dismissal, suspension, counseling, restitution, legal action, notification to legal authorities, disciplinary contract, denial of graduation/diploma, denial of re-enrollment, or other measures deemed necessary by the administration.

Dress Code and Appearance Policy

Lynden Christian's high school dress code and appearance guidelines encourage students to practice Biblical discernment, respect, and modesty. These policies also promote a consistent, helpful, and safe community learning environment for all students. Decisions of dress and personal appearance are primarily a family responsibility; parents should help students determine if clothing choices meet the expectations below. The following expectations apply to school days, field trips, and other school day activities. Further questions or clarification of a particular policy should be addressed to the Assistant Principal.

- Students should wear clothing that appropriately covers the body; they may not wear revealing clothing. Examples include short shorts and skirts, visible undergarments, low necklines, crop tops (or any top that shows midriff), halter tops, spaghetti straps, clothing with revealing holes, or similar apparel. (Tank tops with shoulder straps wider than two inches are allowed.)
- Leggings, and other similar tight clothing, must be worn with a top or accessory that reaches to the gluteal fold or longer.
- Shorts or skirts must be fingertip length or longer (with arms fully extended). This applies to holes in ripped jeans.
- All students must wear safe and comfortable shoes.
- Clothing may not display inappropriate images which promote harmful products or messages. Examples include alcohol, drugs, tobacco, and images that depict violence, intimidation, discrimination, ridicule, racism, sexism, gang symbols, and offensive language.
- Hats may be appropriately worn at the discretion of the administration and teachers.
- To minimize distraction, artificial hair coloring should be natural hair colors.
- Visible tattoos and body piercings may not be distracting.

Students who do not follow these guidelines will need to make the appropriate changes before returning to class. Students who leave campus to change apparel will receive an unexcused absence for the period(s) missed.

Disciplinary Contract

A behavior contract is a tool to help all affected parties deal with targeted, specific behaviors that are outside of our community standards. The following conditions will define this procedure:

- Students will be placed on a behavior contract at the discretion of the school administration after careful evaluation, and consultation with parents.

- The contract will describe the behavior problem and the conditions and expectations for improvement. The behavior contract will also stipulate tools the student should use to change the behaviors.
- A behavior contract may specify that the student on probation will not represent Lynden Christian as a member of any team, organization, activity, or group.

Detentions

Detention will be held from 3:30-4:15pm. Students will be notified the week prior when they have detention and where/when to report. Students who are more than ten minutes late or fail to report for detention will be assigned two more detentions.

Suspension

A student may be suspended for violating school standards. When possible, in-school suspensions will be used. On the day of an in-school suspension, the student must report to the office by 8:30am with enough academic work to occupy his/her time for the day. Students suspended from school are not permitted to participate in after-school practices, rehearsals, performances, or athletic contests on the day(s) of their suspension. The student is released at 3:15p.m. A reentry meeting with parents, administrators, and/or teachers may be required. Suspension is considered unexcused absence. Therefore, a grade reduction penalty may be issued.

Expulsion

Students who do not respond to corrective measures and continue to exhibit negative behavior and/or attitudes, are involved in serious misconduct, or who bring discredit to Lynden Christian School, may be expelled or asked to immediately withdraw and the school board will be given an expulsion recommendation. Parents may appeal the expulsion of their child to the School Board. Examples for which separation/expulsion may occur include, but are not limited to:

- Possession, use or distribution of controlled substances of any kind, or the misuse of any prescribed drugs of any kind, on or off school property
- Possession, consumption, supplying or selling of alcohol, tobacco or tobacco-related products, including vaping devices, on school property or at school sponsored events
- Repeated violations or patterns of misbehavior.
- Failure of parents to cooperate with the school in discipline of their children
- Actual or implied threats related to the school environment and/or to people; assault or battery of a teacher or student
- Sexual misconduct, including but not limited to:
- Any sexual contact or activity outside the allowances of the God-ordained institution of marriage
- Verbal abuse of a sexual nature
- Sexual innuendo and/or gestures
- Possession or distribution of pornographic materials
- Sexual harassment or other sexual misconduct
- Possession and/or use of guns, knives, weapons, or facsimiles of weapons

A student who has lost the privilege to attend Lynden Christian School will not be permitted to attend school-related events on or off campus. These events would include, but are not

limited to; Junior-Senior Banquet, Graduation/Commencement, extracurricular events, athletic or fine arts events, etc.

Searches

The administration recognizes that incidents may occur that jeopardize the health, safety, and welfare of students and staff and necessitate the search and seizure of students, their property, cars, their lockers, cell phone, or any other electronic device by school officials. Students shall be free from unreasonable searches and seizures by school officials. School officials may search a student's outer clothing, pockets, or property by establishing a reasonable cause or securing the student's voluntary consent. The search is reasonable if it meets both of the following criteria:

- The action is justified at the inception, i.e. the school official has reasonable grounds for suspecting that the search will uncover evidence of a rule and/or criminal violation.
- The scope of the search is reasonably related to the circumstances that justified the search in the first place, i.e., the measures adopted are reasonably related to the objectives of the search and are not excessively intrusive in light of the age and gender of the student and the nature of the infraction.

Critical Issues/Conflict Resolution

Theological and Educational Foundations

- **The Holy Scriptures provide the basis for how LC handles controversy.** Lynden Christian Schools and the Board of Directors have adopted several additional documents that guide the educational program. These resources include:
 - **The Three Forms of Unity:** The Belgic Confession, the Heidelberg Catechism, and the Canons of Dordt
 - **Our World Belongs to God:** A contemporary testimony that states our faith and theology
 - **Constitution and By-laws:** The most fundamental statements of purpose and theology that motivated the formation of Lynden Christian Schools and govern its ongoing existence
 - **Lynden Christian Schools – Philosophy, Goals, and Objectives:** This provides theological and educational presuppositions.
 - **Christian Schools International Publications:** From Vision to Action and 12 Affirmations 2.0 These documents developed the basis and purposes of what Reformed Christian schools can and ought to be.

Biblical Conflict Resolution

Scripture guides Christians to respond to controversy and disagreement in ways that seek resolution, reconciliation, and unity among believers. Sin crouches at our doors during times of conflict. The following steps summarize Biblical expectations (further explanation and scripture references are available on the school website).

- **First Step: Preparation.**
 - Become spiritually focused (Galatians 6:1)
 - Look at the log in your own eye (Matthew 7:3-5)
 - Pray forgiveness and blessing (Colossians 3:13)
 - If possible, choose to overlook an offense (Proverbs 19:11)
- **Second Step: Face to Face**
 - Go quickly to the person, in person, to be reconciled. Each word of this step is essential. (Matthew 5:23-26 and 18:13-15)
- **Third Step: Be steadfast in reconciliation**
 - We respond to sin by giving and seeking forgiveness (Ephesians 4:32)
 - We respond to disagreement by pursuing understanding and peace (Ephesians 4:1-3, Romans 12:18). If disagreement remains, we choose to live peaceably without hindering our relationships.
 - We cultivate humility and love (Philippians 2:3-4, Romans 12:10-18).

Responsibility

Student Responsibility

- Pray for wisdom and guidance from the Lord.
- Listen carefully to avoid misunderstanding controversial content and ask thoughtful questions to clarify misunderstanding or confusion.
- Discern bias to identify reliable sources for information.
- Explore multiple perspectives and affirm truth wherever it is found.
- Pursue understanding through careful and empathetic listening.
- Develop curiosity and seek clarification through careful questioning, research, and the guidance of Christian thinkers.
- Think carefully in pursuit of Biblical truth and Godly wisdom.
- Readily engage in healthy discussion, seeking clarification on points of agreement and disagreement.
- Study God's Word and consider how it guides our understanding of controversial issues.
- Learn to resolve conflict in a Biblical manner.

Teachers and Grade Level/Subject Department Responsibility

- Pray for wisdom and guidance from the Lord.
- Identify/anticipate curricular topics that may be divisive or controversial and collaborate with departments and administration on how to proceed.
- Identify and incorporate Biblical guidelines/principles essential to the subject and helpful to students in developing a Christian worldview.
- Plan instruction, activities, and pace to minimize student misunderstanding of challenging topics in the context of a classroom where there may be tension or disagreement.
- Establish essential points of common ground based on scripture and identify areas where Christians hold differing positions. Students should be given clarity on positions supported by the proper understanding and application of scripture.
- Develop a parent communication/feedback plan at the beginning of the year and reinforce this at key times during the year.
- Help students form healthy discussion habits in a grace-filled context.
- Create a safe learning environment for exploring complex issues.
- Follow Biblical Conflict Resolution principles when disagreements arise.
- Consider using resources and ideas offered by community members where appropriate and helpful.
- Adjust instruction to the developmental needs and readiness of students.
- Select, in consultation with department colleagues and administration, appropriate curricular materials and resources.

Administration Responsibility

- Pray for wisdom and guidance from the Lord.
- Identify curricular topics that may be divisive or controversial.
- Guide teachers and staff when (if) to share personal views.
- Help students have appropriate Biblical closure.
- Foster respect in disagreement.

- Selecting learning materials.
- Facilitate conflict resolution training for school personnel.
- Provide clarity or guidance on critical issues or situations with staff.
- Foster community communication.
- Foster institutional consistency regarding the instruction of controversial issues taking into consideration the developmental levels in students.
- Articulate the value of researching, understanding, and evaluating different perspectives in the educational context.
- Ensure Biblical Conflict Resolution principles and school protocols are followed when complaints or concerns arise.
- Research and provide parent and community resources.
- Share important documents and policies with the school community.
- Inform the Board about issues that arise.
- Collaborate with the Board regarding the need for position statements.

Parent Responsibility

- Pray for wisdom and guidance from the Lord.
- Become familiar with LC's guiding educational principles and documents on the school website.
- Become familiar with course information and materials shared by teachers.
- Seek clarification or address questions directly and privately with the teacher or staff member directly responsible for the matter of concern.
- Parents of older students should guide students in seeking clarification directly with the teacher or staff member.
- Follow the steps of Biblical Conflict Resolution when there is disagreement or the need for reconciliation.
- Support school policies and protocols.
- Establish positive and constructive communication with school personnel.
- Follow the appropriate communication steps as outlined by the administration of each school building and by board policy.

School Board Responsibility

- Pray for wisdom and guidance from the Lord. Work with the superintendent to discuss and approve school positions on topics as needed.
- Direct parents and community members to pursue clarification directly with the teacher or administrator according to building policy and Biblical Conflict Resolution.
- Review Board policies to clarify appropriate channels of communication.

Church Responsibility

- Pray for wisdom and guidance from the Lord.
- Serve as a resource for positions related to theological underpinnings.
- Support the school in directing and encouraging members toward Biblical resolution.

Bullying & Harassment

Lynden Christian Schools promotes Christian Community and living in harmony and shalom. Harassment, intimidation, or bullying are not acceptable behaviors. Our policy is written in accordance with our Biblical worldview, the State of Washington (RCW 28A.300.285) and the approval of the Lynden Christian School Board.

The emphasis of this policy is on educating and promoting positive Christian Community. It is our desire that all students learn how to live and behave in a way that honors and respects God and neighbor. All students need to learn to behave with kindness, patience, understanding and resiliency. We know that conflict amongst students will happen. But we are grateful that we can deal with conflict within a Christian school and in Christ's community.

Bullying, Harassment, & Intimidation

Bullying falls into one or more of the following categories and is intentional (done on purpose), repeated (happens more than once), and often involves an imbalance of physical or social power.

- Physical bullying – an action harming another's body
- Verbal bullying – using words (or gestures) to intentionally hurt someone's feelings
- Social bullying – excluding someone on purpose or controlling one's friendships through intimidation
- Cyber-bullying – bullying done through the internet, cell phones, or video games

Harassment and intimidation are defined as any intentional written, verbal, electronic or physical act. This includes but is not limited to actions motivated by race, skin color, social status, gender, ability, political or religious views, or other distinguishing characteristics with the intent or the result of:

- Harming another student or damaging a student's property
- Substantially interfering with a student's education
- Creating an intimidating or threatening social, educational, or extracurricular environment
- Disrupting the order or operation of the school

There will be a response to harassment, intimidation, and bullying. The escalation, frequency or severity of the event(s) will determine the level of response. An essential part of this process is documentation and restoration. Responses will follow this general progression:

- Verbal warning by teacher/principal
- Review of bullying definition and policy; incident documented.
- Parent notification.
- Intervention aimed at changing bullying behaviors: teacher or principal involvement, school counselor involvement, restitution.
- Consequences: missed recess, restitution, and school counselor intervention, in

school suspension, out of school suspension, professional intervention required for continued enrollment, expulsion.

Documentation and restoration of relationships will continue throughout every step of the process.

Sexual Harassment

Sexual harassment of students by other students or by employees of the Lynden Christian School is unlawful and contrary to our religious beliefs and the commitment of this school to provide a stable learning and working environment. School authorities will not tolerate any sexual harassment of students and staff. It is the policy of this school that all contact between students, teachers, and other adult employees be in keeping with respect for the individual students, be of a nature which does not make a student feel uncomfortable and be conducive to creating a stable environment.

Sexual harassment includes making unwelcomed sexual advances, engaging in improper physical contact, making improper sexual comments, or otherwise creating an intimidating, hostile, or offensive educational learning environment. All students and all school employees are expected to conduct themselves with respect for the dignity of others.

If a student has concerns about the nature of any conduct or physical contact by an adult employed by this school, by a fellow student, or by a member of the public, the student should immediately report this concern to a school employee (such as a teacher, administrator, counselor, etc.). The student should also discuss this concern with parents or guardians.

Students are encouraged to report any conduct or contact that makes them feel uncomfortable, is bothersome, or is contrary to a stable learning environment.

All such reports will be investigated immediately by school authorities. Criminal charges will be handled by civil authorities. Anyone found to have violated this policy will be subject to disciplinary action up to and including expulsion from school if they are a student, termination from employment if they are an employee, or criminal charges if they are filed.

All such reports will be handled discreetly to maintain confidentiality to avoid embarrassment and to protect the student making the report. However, this school is required by law to report child abuse to the appropriate social agency, which protects the rights of individuals in such cases.

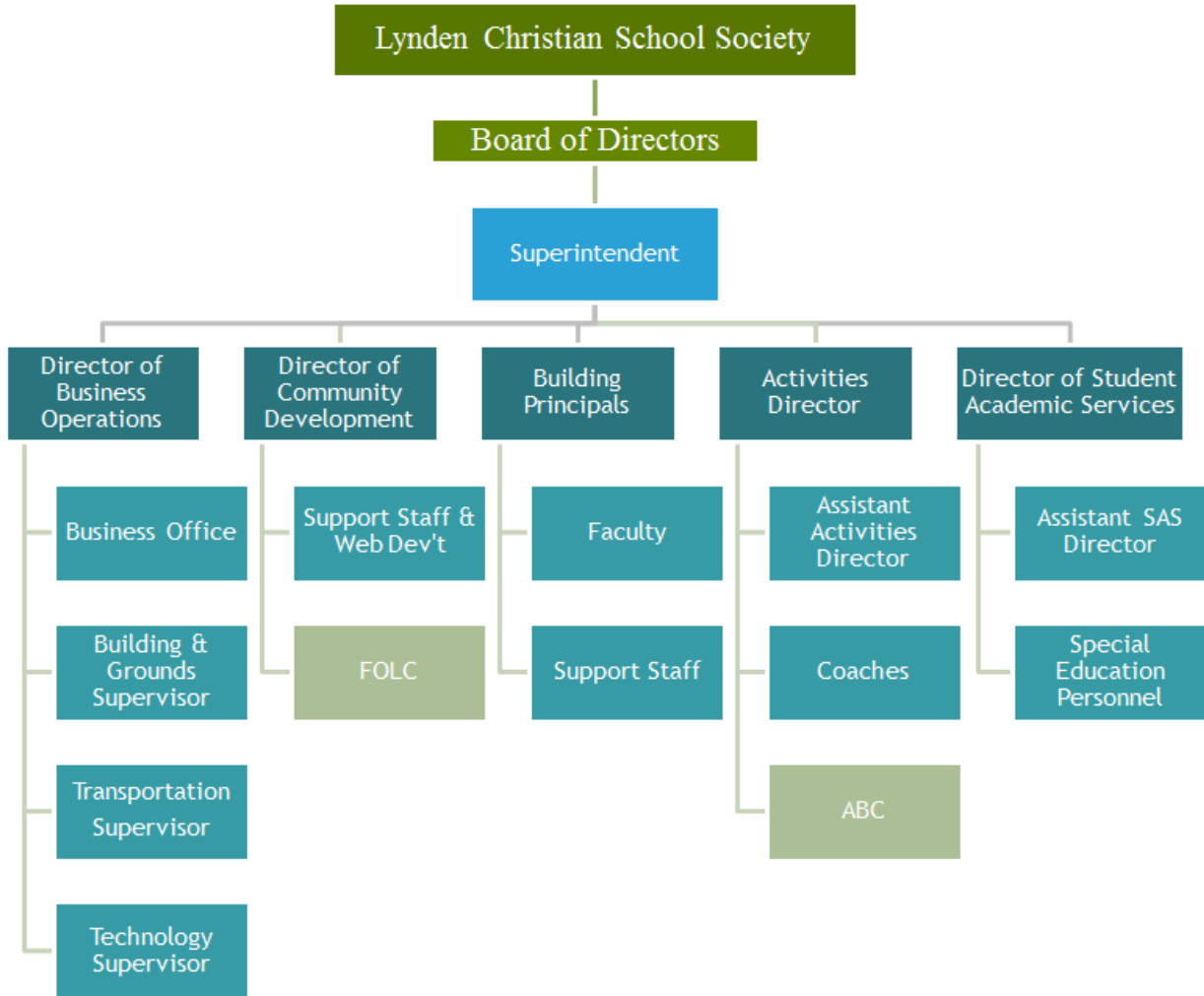
LCS Position Statement on Human Sexuality & Gender Identity

Please go to [Appendix G](#) to view LCS' entire Position Statement on [Human Sexuality & Gender Identity](#)

Appendices

Appendix A

LCS Organization Chart



Appendix B

LCHS Faculty & Staff

Mrs. Amy Blankers	Librarian, Math
Mr. Brady Bomber	CTE Business, Math
Mrs. Lyza Brady	Plant Operations
Mrs. Ellie Corbin	CTE Horticulture
Mrs. Jayleen Corkill	SAS Discovery
Mrs. Kelley DeJong	CTE Agriculture
Mrs. Shelly DeJong	CTE Horticulture
Mrs. Niki DeYoung	Math
Mrs. Janelle Draayer	Social Studies
Mrs. Melissa Engels	English
Mrs. Hannah Faber	Nurse
Mrs. Laura French	Drama Director
Mr. Mark French	Yearbook & Audio/Visual Technician
Mrs. Becky Gerlach	Chapel Worship Team Coordinator
Mrs. Kimberly Grycel	Math, Physical Education
Mr. Matthew Gudakov	Orchestra
Mrs. Melanie Heldoorn	SAS Guided Study
Mrs. Kristen Hinton	Math
Mrs. Karen Houseman	Academic & Career Counselor
Mr. Mark Houseman	Director of Technology
Mr. Paul Huffman	Science
Mrs. Rachel Hutchins	Musical Director
Mr. Craig Johnson	Principal
Mrs. Kelly Kaemingk	Math
Dr. Kevin Kaemingk	Social Studies
Mrs. Hannah Keen	English
Mrs. Jill Kocourek	CTE Business, Consumer Science, Social Studies
Mrs. Alyssa Kooi	Social Studies
Mrs. Leah Laird	English
Mrs. Lyndsey Lensen	Nurse
Mrs. Vicki Lindquist	Activities Assistant, HS Bookkeeper
Mr. Adam Lucas	CTE Shop
Mr. Nate Lynch	SAS Para-Educator
Mrs. Stacey Martin	<i>Be The One</i> Coordinator
Mrs. Melissa Meyer	CTE Director, Business, Computer Science
Mrs. Carol Morgan	Spanish
Rev. James Ogle	Chaplain
Mrs. Laura Ogle	English
Mrs. Heidi Price	Bible, Social Studies
Mr. Ken Quehrn	Band
Karen Rodriguez	Custodian

Mrs. Nicole Roetcisoender	Science
Mrs. Karen Sebens	SAS Discovery
Mrs. Shauna Senti	Spanish
Mrs. Karrin Simpson	Office Administrative Assistant
Mrs. Renae Sloan	Assistant Principal, Choir
Mr. Jonathan Syltie	Art
Mr. Josh Turner	CTE Shop
Ms. Brenda Terpstra	Activities Director
Mrs. Richelle Urie	Registrar
Mrs. Carla Vander Kooi	SAS Inclusion Specialist
Mrs. Taylor VanderYacht	English
Mrs. Amy VandeVoort	SAS Discovery Director
Mr. Jon VanHulzen	Bible
Mrs. Brenda VanRooyen	Para-Educator
Miss Mandy Warner	Physical Education
Mrs. Sara Whitehead	Science

Appendix C

2022-2023 School Calendar

Lynden Christian Schools

2022-2023 School Calendar



Approved
2/7/2022

August '22							September '22							October '22							November '22								
S	M	T	W	T	F	S	S	M	T	W	T	F	S	S	M	T	W	T	F	S	S	M	T	W	T	F	S		
		1	2	3	4	5	6				1	2	3								1			1	2	3	4	5	
7	8	9	10	11	12	13		4	5	6	7	8	9	10		2	3	4	5	6	7	8	6	7	8	9	10	11	12
14	15	16	17	18	19	20		11	23	13	14	15	16	17		9	10	11	12	13	14	15	13	14	15	16	17	18	19
21	22	23	24	25	26	27		18	19	20	21	22	23	24		16	17	18	19	20	21	22	20	21	22	23	24	25	26
28	29	30	31					25	26	27	28	29	30		23	24	25	26	27	28	29	27	28	29	30				

Aug 22-23: High School Registration/Pictures/ Athletic Band/ Schedule
 Aug 24: Teachers Pro-Development
 Aug 25: All Staff Retreat/ Teachers Work Day
 Aug 29: Teachers work day/ Open House 1/2 Day
 Aug 30: First day of school: 1:30 PM Dismissal

December '22							January '23							February '23							March '23									
S	M	T	W	T	F	S	S	M	T	W	T	F	S	S	M	T	W	T	F	S	S	M	T	W	T	F	S			
				1	2	3												1	2	3	4					1	2	3	4	
4	5	6	7	8	9	10		1	2	3	4	5	6	7		5	6	7	8	9	10	11		5	6	7	8	9	10	11
11	12	13	14	15	16	17		8	9	10	11	12	13	14		12	13	14	15	16	17	18		12	13	14	15	16	17	18
18	19	20	21	22	23	24		15	16	17	18	19	20*	21		19	20	21	22	23	24	25		19	20	21	22	23	24	25
25	26	27	28	29	30	31		22	23	24	25	26	27	28		26	27	28						26	27	28	29	30	31	

Dec 16: Early Release—12 PM
 Dec 19— Jan 2 Christmas Vacation

April '23							May '23							June '23								
S	M	T	W	T	F	S	S	M	T	W	T	F	S	S	M	T	W	T	F	S		
					1													1	2	3		
2	3	4	5	6	7	8		7	8	9	10	11	12	13		4	5	6	7	8	9	10
9	10	11	12	13	14	15		14	15	16	17	18	19	20		11	12	13	14	15	16	17
16	17	18	19	20	21	22		21	22	23	24	25	26	27		18	19	20	21	23	23	24
23	24	25	26	27	28	29		28	29	30	31				25	26	27	28	29	30		
30																						

Apr 3-7 Spring Break—No School
 Apr 17: Teacher Pro-D—No School

August '22							September '22							October '22							November '22								
S	M	T	W	T	F	S	S	M	T	W	T	F	S	S	M	T	W	T	F	S	S	M	T	W	T	F	S		
		1	2	3	4	5	6				1	2	3								1			1	2	3	4	5	
7	8	9	10	11	12	13		4	5	6	7	8	9	10		2	3	4	5	6	7	8	6	7	8	9	10	11	12
14	15	16	17	18	19	20		11	23	13	14	15	16	17		9	10	11	12	13	14	15	13	14	15	16	17	18	19
21	22	23	24	25	26	27		18	19	20	21	22	23	24		16	17	18	19	20	21	22	20	21	22	23	24	25	26
28	29	30	31					25	26	27	28	29	30		23	24	25	26	27	28	29	27	28	29	30				

Nov 9: Parent Teacher Conferences PM—Early Release at 12 PM
 Nov 10: Parent Teacher Conferences AM and PM
 Nov 10: No School
 Nov 11: Veterans Day—No School
 Nov 24-25: Thanksgiving Vacation—No School

August '22							September '22							October '22							November '22							
S	M	T	W	T	F	S	S	M	T	W	T	F	S	S	M	T	W	T	F	S	S	M	T	W	T	F	S	

Key:
 Beginning of the Year (Blue)
 Parent/Teacher Conferences No School (Diagonal lines)
 High School Only (Pink)
 End of the Year (Light Blue)
 End of Teaching Period (Star)
 High School Graduation (Star)
 High School Graduation (Star)

Appendix D

2022-2023 Class Schedule

LCHS Class Schedule 2022-23									
White Monday		Blue Late-Start Tuesday		White Wednesday		Navy Thursday		Black (1-7) Friday	
1st	8:30-10:00	2nd ✓	9:15-9:17	1st	8:30-10:00	2nd	8:30-10:00	1st	8:30-9:19
		Chapel	9:20-10:00	Break	10:00-10:14	Break	10:00-10:14	Pass	9:19-9:24
Break	10:00-10:14	Break	10:00-10:14	Break	10:00-10:14	Break	10:00-10:14	2nd	9:24-10:13
3rd	10:14-11:41	2nd	10:14-11:41	3rd	10:14-11:41	4th	10:14-11:41	Break	10:13-10:23
Lunch	11:41-12:01	Lunch	11:41-12:01	Lunch	11:41-12:01	Lunch	11:41-12:01	3rd	10:23-11:12
Pass	12:01-12:11	Pass	12:01-12:11	Pass	12:01-12:11	Pass	12:01-12:11	Pass	11:12-11:17
5th	12:11-1:38	4th	12:11-1:38	5th	12:11-1:38	6th	12:11-1:38	Lunch	11:17-12:06
Break	1:38-1:48	Break	1:38-1:48	Break	1:38-1:48	Break	1:38-1:48	Pass	12:06-12:26
7th	1:48-3:15	6th	1:48-3:15	7th	1:48-3:15	PlusBlock A	1:48-2:28	5th	12:26-12:36
						PlusBlock B	2:33-3:15	Pass	12:36-1:25
								Pass	1:25-1:30
								6th	1:30-2:19
								Pass	2:19-2:24
								7th	2:24-3:15

Appendix E

Acceptable Use Policy

Introduction

Lynden Christian High School recognizes the appropriate technology in school gives students greater opportunities to learn, engage, communicate, and develop skills that will prepare them for vocation, life, and citizenship. We are committed to helping students develop 21st-century technology and communication skills. LCHS's network, hardware, and software is available for appropriate use by students, staff, and guests. The use of this technology, whether owned by LCHS, or devices using LCHS network required personal responsibility and compliance with LCHS policy. It is expected that users will comply with LCHS rules, act in a responsible manner, and honor the terms and conditions set by the classroom teacher and the school.

Technologies Covered

This Acceptable Use Policy outlines the guidelines and behaviors that all users are expected to follow when using the following technology: internet access, desktop computers, mobile computers or devices, video conferencing equipment, LMS programs, online collaboration services, hardware, software, message boards, email, and anything related to technology. This Acceptable Use Policy applies to school-owned technology equipment and/or privately-owned devices utilizing the LCHS network, LCHS Internet connections, and/or private networks/Internet connections accessed from school-owned devices while on school campus, busses, or events. The policies also apply to future technologies purchased or provided by the school.

- The LCHS network is intended for educational purposes.
- All activity over the network or using district technologies may be monitored and retained.
- Access to online content via the network may be restricted in accordance with our policies.
- Students are expected to follow the same rules for good behavior and respectful conduct online as they do offline.
- Misuse of school resources and/or property can result in disciplinary action.
- LCHS makes a reasonable effort to ensure students' safety and security online but will not be held accountable for any harm or damages that result from use of school technologies. Every User must take responsibility for his or her use of technology and make every effort to avoid inappropriate types of content.
- Users of the district network or other technologies are expected to alert LCHS immediately of any concerns for safety and/or security.

Usage Policies

All users are expected to use good judgment and to follow the specifics as well as the spirit of this document: be safe, appropriate, careful, and kind; refrain from circumventing the school protection measures; use common sense; and seek help or permission from the school's designated authority. A "user" is defined as anyone, including employees, students, and guests on campus, or attending any school-related activity.

Web Access

LCHS provides users the privilege of internet access, including web sites, resources, content, and online tools. Access to the internet will be restricted as required to comply with school policies. Web browsing may be monitored, and web activity records may be retained indefinitely. Users are expected to respect the web filter as a safety precaution and shall not attempt to circumvent the web filter when browsing the Internet. The determination of whether material is appropriate or inappropriate is based solely on the content of the material and the intended use of the material, not on whether a website has been blocked or not. If a user believes a site is unnecessarily blocked, the user should submit a request for website review to the school IT director or administration.

Email/Social/Web/Collaborative Content

LCHS may provide users with the privilege of email accounts and access to websites and tools that allow communication, collaboration, sharing and messaging among users for the purpose of school-related communication. Availability and use may be restricted based on school policies. If users are provided with these communicative abilities, they should be used with care. Users should not attempt to open files or follow links from unknown or untrusted origins; should use appropriate language; and should only communicate with other people as allowed by the district policy or the teacher. Users are expected to communicate with the same appropriate, safe, mindful, courteous conduct online as offline. Email usage, posts, chats, sharing and messaging may be monitored and archived.

Security

Users are expected to take reasonable safeguards against the transmission of security threats over the school network. This includes not opening or distributing infected files or programs and not opening files or programs of unknown or untrusted origin. If you believe a computer or mobile device you are using might be infected with a virus, please alert the administration or the IT director. Do not attempt to remove the virus yourself or download any programs to help remove the virus.

Plagiarism

Users should not plagiarize (or use as their own, without citing the original creator) content, including words or images, from the Internet. Users should not take credit for things they did not create themselves or misrepresent themselves as an author or creator of something found online. Research conducted via the Internet should be appropriately cited, giving credit to the original author.

Personal Safety

Users should never share personal information, including phone number, address, social security number, birthday, or financial information, over the Internet without adult permission/supervision. Users should recognize that communicating over the Internet brings anonymity and associated risks and should carefully safeguard the personal information of themselves and others. If you see a

message, comment, image, or anything else online that makes you concerned for your personal safety, bring it to the attention of an adult (teacher or staff if you are at school; parent if you are using the device at home) immediately. Users should remember not to post anything online that they would not want students, parents, teachers, or future colleges or employers to see. Once something is online, it is out there—and can sometimes be shared and spread in ways you never intended.

Cyber Bullying

Cyber bullying will not be tolerated. Harassing, dissing, flaming, denigrating, impersonating, outing, tricking, excluding, and cyber stalking are all examples of cyberbullying. Do not be mean. Do not send emails or post comments with the intent of scaring, hurting, or intimidating someone else. Engaging in these behaviors, or any online activities intended to harm (physically, emotionally, or otherwise) another person, will result in severe disciplinary action and loss of privileges. In some cases, cyber bullying can be a crime. Remember that your activities are monitored and retained.

Cyber bullying includes inappropriate communication. Inappropriate communication includes, but is not limited to, the following: obscene, profane, lewd, vulgar, rude, inflammatory, threatening, or disrespectful language or images typed, posted, or spoken by students; information that could cause damage to an individual or the school community or create the danger of disruption of the academic environment; personal attacks, including prejudicial or discriminatory attacks; harassment (persistently acting in a manner that distresses or annoys another person) or stalking of others; knowingly or recklessly posting false or defamatory information about a person or organization; and communication that promotes the destruction of property, including the acquisition or creation of weapons or other destructive devices. If a student is told to stop sending communications, that student must cease the activity immediately.

Examples of Acceptable Use

I will:

- Use school technologies for school-related activities.
- Follow the same guidelines for respectful, responsible behavior online that I am expected to follow offline.
- Treat school resources carefully, and alert staff if there is any problem with their operation.
- Encourage positive, constructive discussion if allowed to use communicative or collaborative technologies.
- Alert a teacher or other staff member if I see threatening, inappropriate, or harmful content (images, messages, and posts) online.
- Use school technologies at appropriate times, in approved places, for educational pursuits.
- Cite sources when using online sites and resources for research.
- Recognize that use of school technologies is a privilege and treat it as such.
- Be cautious to protect the safety of myself and others.
- Help to protect the security of school resources.

Examples of Unacceptable Use

I will not:

- Use school technologies in a way that could be personally or physically harmful.
- Attempt to find inappropriate images or content; intent to seek inappropriate images or content is a violation of this Acceptable Use Policy.
- Engage in cyber bullying, harassment, or disrespectful conduct toward others.
- Try to find ways to circumvent the school's safety measures and filtering tools; intent to circumvent safety measures and filtering tools is a violation of this Acceptable Use Policy.
- Use school technologies to send spam or chain mail.
- Plagiarize content I find online.
- Post or otherwise disclose personally identifying information, about myself or others.
- Use online language would be unacceptable in the classroom.
- Use school technologies for illegal activities or to pursue information on such activities.
- Attempt to hack or access sites, servers, or content that is not intended for my use.

This is not intended to be an exhaustive list. Users should use their own good judgment when using school technologies.

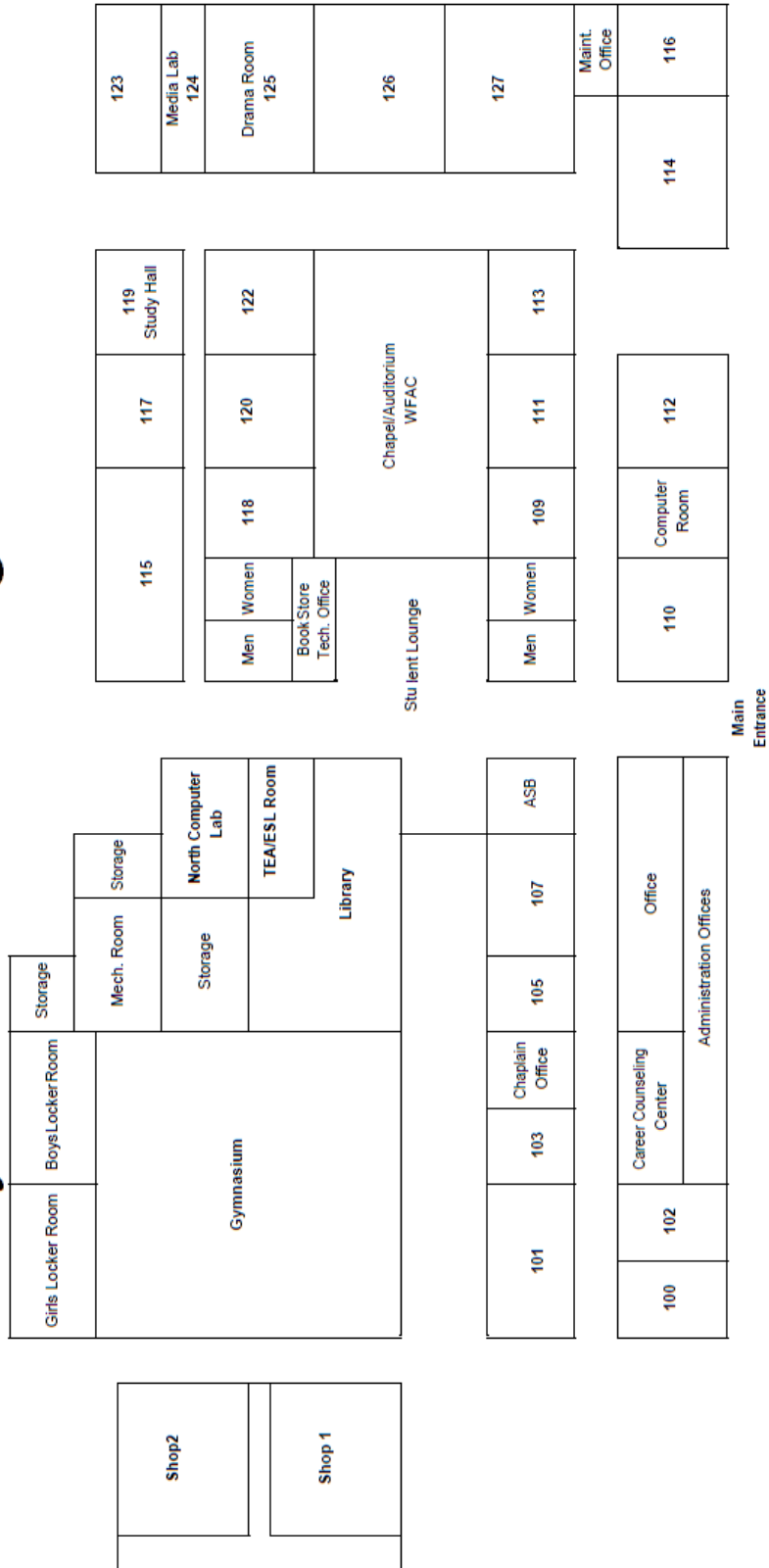
Violations of this Acceptable Use Policy

- Violations of this policy may have disciplinary repercussions, including suspension of network, technology, or computer privileges;
- Notification to parents;
- Detention or suspension from school and school-related activities;
- Employment disciplinary action.
- Legal action and/or prosecution.

Appendix F

LCHS Building Map

Lynden Christian High School



Appendix G

LCS Position Statement on Human Sexuality & Gender Identity

Because human beings are created in the image of God their Creator, we affirm that all humans, male and female, homosexual, heterosexual, bisexual or otherwise have inestimable value and must be treated with dignity and respect.

As a community that seeks to be an authentic biblical community, Lynden Christian Schools is committed to addressing all issues of human sexuality and gender identity with grace and truth.**

We also affirm that one need not approve of a person's behavior in order to love them in Christ. God loves sinners, including those who sin differently than we do. Lynden Christian School affirms the following interpretive framework regarding God's intent for human sexuality:

- The Creator's intent for human sexuality finds its fulfillment between a man and a woman within the bond of the marriage covenant. To experience the fullness of God's loving intent in human sexuality, sexual experience is intended to be celebrated between a man and a woman within that covenant union.
- Same gender and heterosexual lust are conditions contrary to God's created order which reveals the brokenness of our sinful world and the effects of sin on God's perfect intent for human sexuality. Being attracted to persons of the same sex is not culpable or sinful.
- Heterosexual practice outside the covenant of marriage and all homosexual practice is incompatible with the will of God as revealed in scripture and is sin demanding confession and repentance.
- God created two genders - male and female - determined biologically at birth.
- None of us has measured up to God's perfect will for our sexuality, and thus we are all in need of, and able to receive, abundant grace and forgiveness through our Savior Jesus Christ.
- We will communicate and uphold God's standards for human sexuality and gender identity with grace, mercy, compassion, and equity.

In light of the above framework, Lynden Christian School commits itself to the following standards of Christian practice:

- Exercising patient understanding of and compassion for all students struggling with any issue of sexuality or gender identity.
- Ensuring an environment that is free from discrimination.
 - No student, heterosexual or homosexual, will be pressured to disclose their sexual orientation.
 - No student will be expelled or excluded on the basis of their same gender attraction.
- Insisting upon an atmosphere that is a safe learning environment for all students.
 - Physical assault, harassment (snide remarks, jokes, innuendo, slogans, disparaging terms), or bullying on the basis of one's sexual orientation will not be tolerated. This policy extends to gestures, emails, text messages, notes and any other written or electronic form of threat or

harassment.

- Gay or anti-gay militancy is regarded as incompatible with Christian community and therefore will not be tolerated.
- Public displays of affection between couples will not be allowed.
- Providing all students with the following:
 - A compassionate venue in which to engage in authentic dialogue about the very real, confusing, and often painful issues related to human sexuality and gender identity.
 - The assurance of confidentiality except in instances of suicidal ideation or other self-harming behaviors.
 - School counselors who will offer biblical guidance, resources, and options for referral for counseling.
 - An assurance that the dignity of all students and families will be guarded.
- Acknowledging our own human frailty and dependence upon Christ for his humility, grace, and wisdom in our considerations of human sexuality, seeking always to love one another as He has loved us.

** Lynden Christian Schools has established this Position Statement on Human Sexuality and Gender Identity for a variety of reasons:

- To give clarity for staff, students, and families around these topics
- To provide direction for instruction around these topics
- To protect the organization legally, particularly in areas of employment and enrollment
- To direct policy making

* We acknowledge with gratitude the influence of the following institutions upon the writing of this document

- Society of Christian Schools in British Columbia, *Same Gender Attraction: A Discussion Among Our Christian School Communities*
- Seattle Pacific University, *Statement on Human Sexuality*
- Unity Christian School, *Guidelines for Respecting Diversity*
- Christian Reformed Church of North America, *Committee to Study Homosexuality*, Report 42, art. 53
- Christian Reformed Church of North America, *Pastoral Care for Homosexual Members*
- Edmonton Christian Schools, *Staff Guidelines for Creating a Safe and Caring School for Lesbian, Gay, Bisexual and Transgendered Students*



Contacts

Lynden Christian High School
515 Drayton St. Lynden, WA 98264
360-318-9525
360-354-1047, Fax www.lyncs.org

Craig Johnson, High School Principal
cjohnson@lyncs.org

Renae Sloan, High School Assistant Principal
rsloan@lyncs.org

Paul Bootsma, Superintendent
pbootsma@lyncs.org